

[Subscribe](#)[Past Issues](#)[Translate ▼](#)[RSS](#)[View this email in your browser](#)

Global Health Institute
UNIVERSITY OF WISCONSIN-MADISON



EVENTS +

CAN'T MISS IN THIS ISSUE ▼

MAY 20: GLOBAL HEALTH WEBINAR
CITIES, CLIMATE CHANGE, & HEALTH

REGISTER FOR GHI'S MAY 20 WEBINAR,
"CITIES, CLIMATE CHANGE, & HEALTH" ▼



Global Health Institute
UNIVERSITY OF WISCONSIN-MADISON

CITIES, CLIMATE CHANGE, & HEALTH

GLOBAL HEALTH TUESDAY WEBINAR
TUESDAY, MAY 20, 9-10AM (CST)



Linda Vakunta
Deputy Mayor,
City of Madison



Eduardo Santana Castellón
Director, Museum of
Environmental
Sciences, and
Emeritus Professor,
University of
Guadalajara



Marta Rofin Serrà
Founder & CEO,
Healthy Cities;
Director, "Urban
Planning & Health,"
Polytechnic
University of
Catalonia



Carlos Moreno
Professor,
IAE Paris Sorbonne,
University of Paris;
Author,
*The 15-Minute City:
A Solution to
Saving Our Time
& Our Planet*



Visit ghi.wisc.edu
For more information



[Subscribe](#)[Past Issues](#)[Translate ▼](#)[RSS](#)

9-10am (CST), when Linda Vakunta, Deputy Mayor of Madison, moderates a timely conversation on **Cities, Climate Change, and Health**.

Vakunta leads the discussion with Eduardo Santana Castellón, Director, Museum of Environmental Sciences, and Emeritus Professor, University of Guadalajara; Marta Rofín Serrà, Founder & CEO, Healthy Cities, and Director, "Urban Planning & Health," Polytechnic University of Catalonia; and Carlos Moreno, Professor, IAE Paris Sorbonne, University of Paris, and Author, *The 15-Minute City: A Solution to Saving Our Time & Our Planet*.

[Click here to learn more](#). Please register here using this [Zoom registration link](#).

MARK YOUR CALENDAR ▼

APRIL

Real Talk: Navigating Life Post Graduation

Tuesday, April 29 | 4-6 PM
Memorial Union (See TITU)

Join us for a presentation from the School of Human Ecology Advising and Career Center and a panel discussion from recent UW-Madison graduates.

Free pizza and notebook portfolios (first come, first served)

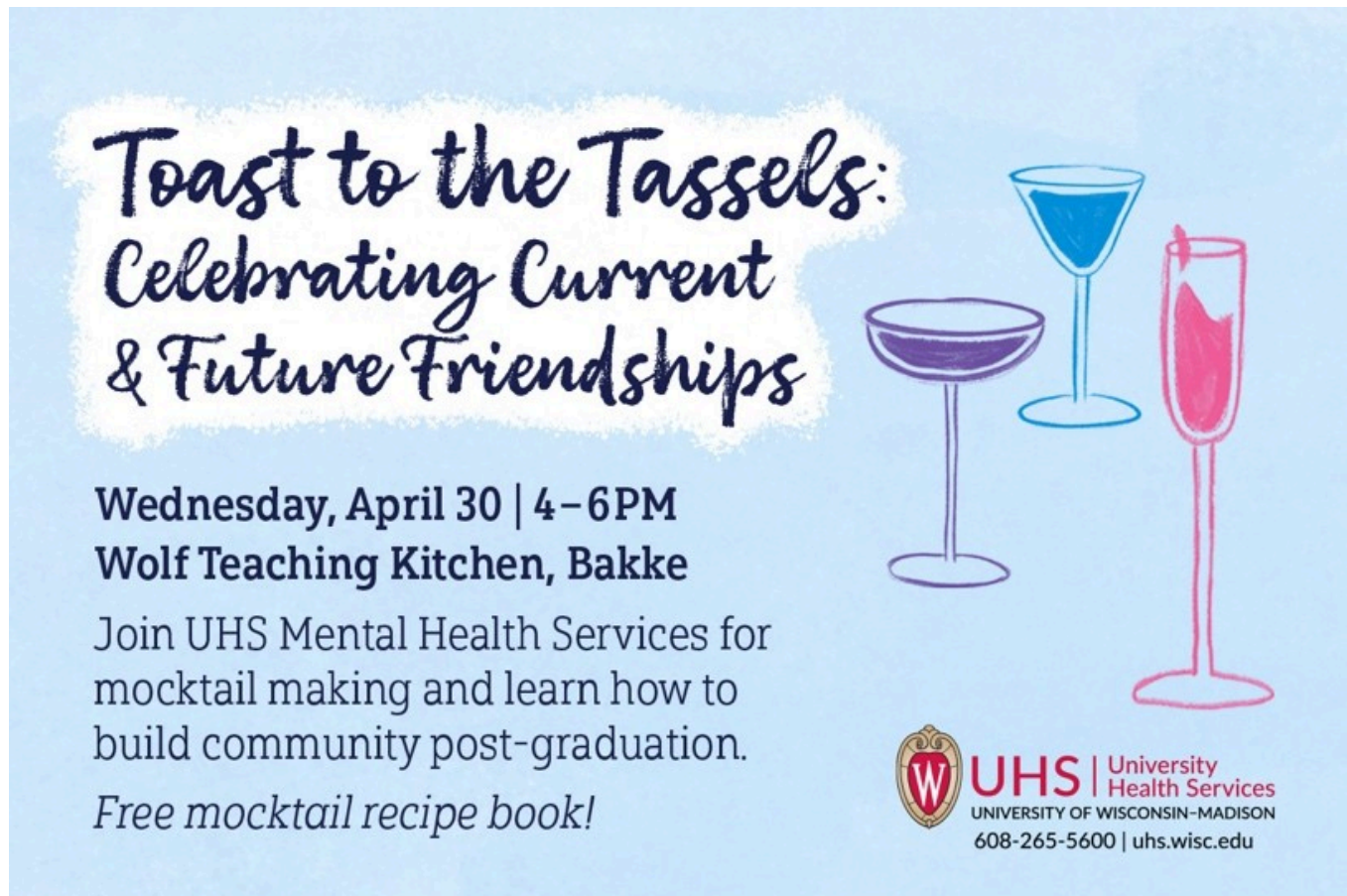
UHS | University Health Services
 UNIVERSITY OF WISCONSIN-MADISON

TODAY: Join UHS Mental Health Services and the School of Human Ecology Advising & Career Center **TODAY, April 29, from 4-6pm**, for a presentation and panel discussion with recent UW-Madison alumni about their transition from college to life after graduation. Get tips and insights to help you navigate your next chapter. Free pizza and notebook portfolios (while supplies last). [Click here to learn more](#).

30: The School of Education invites campus and community partners on **Wednesday, April 30 from 11am - 12:30pm** for the last event in the Indigenous Education Speakers' Series for the 2024-2025 academic year. Featured speaker, From 11am-12pm, [Dr. Lois Stevens](#), Assistant Professor of First Nations Studies and the First

[Subscribe](#)[Past Issues](#)[Translate ▼](#)[RSS](#)


The event takes place in room 401B of the Teacher Education Building. The Indigenous Education Speakers' Series is jointly sponsored by [Mary T. Kellner Teacher Education Center](#), [Department of Education Policy Studies](#), and [Department of Curriculum and Instruction](#). [Click here to register](#).



**Toast to the Tassels:
Celebrating Current
& Future Friendships**

Wednesday, April 30 | 4–6PM
Wolf Teaching Kitchen, Bakke

Join UHS Mental Health Services for mocktail making and learn how to build community post-graduation.
Free mocktail recipe book!

 **UHS** | University Health Services
UNIVERSITY OF WISCONSIN-MADISON
608-265-5600 | uhs.wisc.edu

30: Join UHS Mental Health Services **TOMORROW, April 30, from 4-6pm**, for a mocktail and mingle celebration! Make your own mocktails and learn practical strategies to stay connected and build new friendships after graduation. Exclusive mocktail recipe book giveaway! [Click here to learn more](#).

MAY

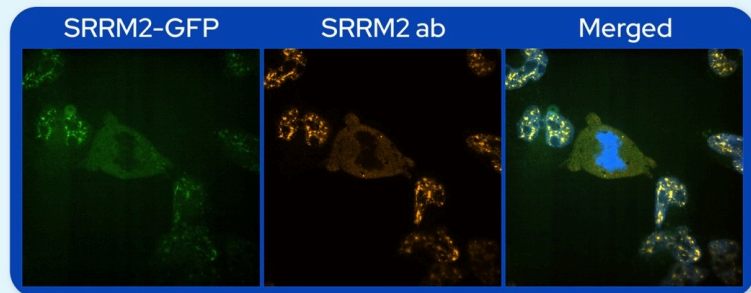
Special Seminar

Jeffrey Toretsky

Professor and Peds Hematology-Oncology Division Director
Georgetown University



Creating a drug for an 'undruggable' oncogene in Ewing sarcoma



Thursday, May 1, 2:00 p.m.

Room 1211, DeLuca Biochemical Sciences Building

Please contact Brian Fox (bgfox@wisc.edu) with any questions.



Department of Biochemistry
COLLEGE OF AGRICULTURAL & LIFE SCIENCES
UNIVERSITY OF WISCONSIN-MADISON

UW-Madison occupies ancestral Ho-Chunk land, a place the Ho-Chunk Nation has called Teejop since time immemorial.

1: Join the Department of Biochemistry for a Special Seminar by Jeffrey Toretsky on **Thursday, May 1, at 2pm**, with the topic of "Creating a drug for an 'undruggable' oncogene in Ewing sarcoma." [Click here to learn more.](#)

Subscribe

Past Issues

Translate ▼

RSS

Caps & Conversations

Thursday, May 1 | 4–6 PM
Wheelhouse Studios

Join UHS Mental Health Services to decorate your graduation cap and for a discussion about transitioning to post-grad life!

Art materials will be provided at no cost.
 Don't forget your cap!



1: Join UHS Mental Health Services and Wheelhouse Studios on **Thursday, May 1, from 4-6pm**, to decorate your graduation cap and engage in a facilitated discussion about coping with transition and change. Art materials will be provided at no cost. Don't forget your cap! [Click here to learn more.](#)

9-10: Join 'Plant Sale for a good cause!' for veggies, herbs, annuals, perennials, natives, and some house plants **May 9 (12-5pm) and May 10 (8am-4:30pm)** at 230 S. Owen Drive. Proceeds support Kidlinks World. Kidlinks is a 50(c)3 non-profit organization with the mission of improving the lives of vulnerable children in Wisconsin and South Africa by forming partnerships with grass roots initiatives and supporting programs that serve the children on a daily basis. This year, they are also supporting Briarpatch Youth Services in Dane County. [Click here to learn more.](#)

[Subscribe](#)[Past Issues](#)[Translate ▼](#)[RSS](#)

UW & YOU COMMUNITY VOICES IN MADISON & MILWAUKEE

Learn about community
involvement in UW research

FREE event with lunch
included



**SATURDAY MAY 10
10AM-2PM**

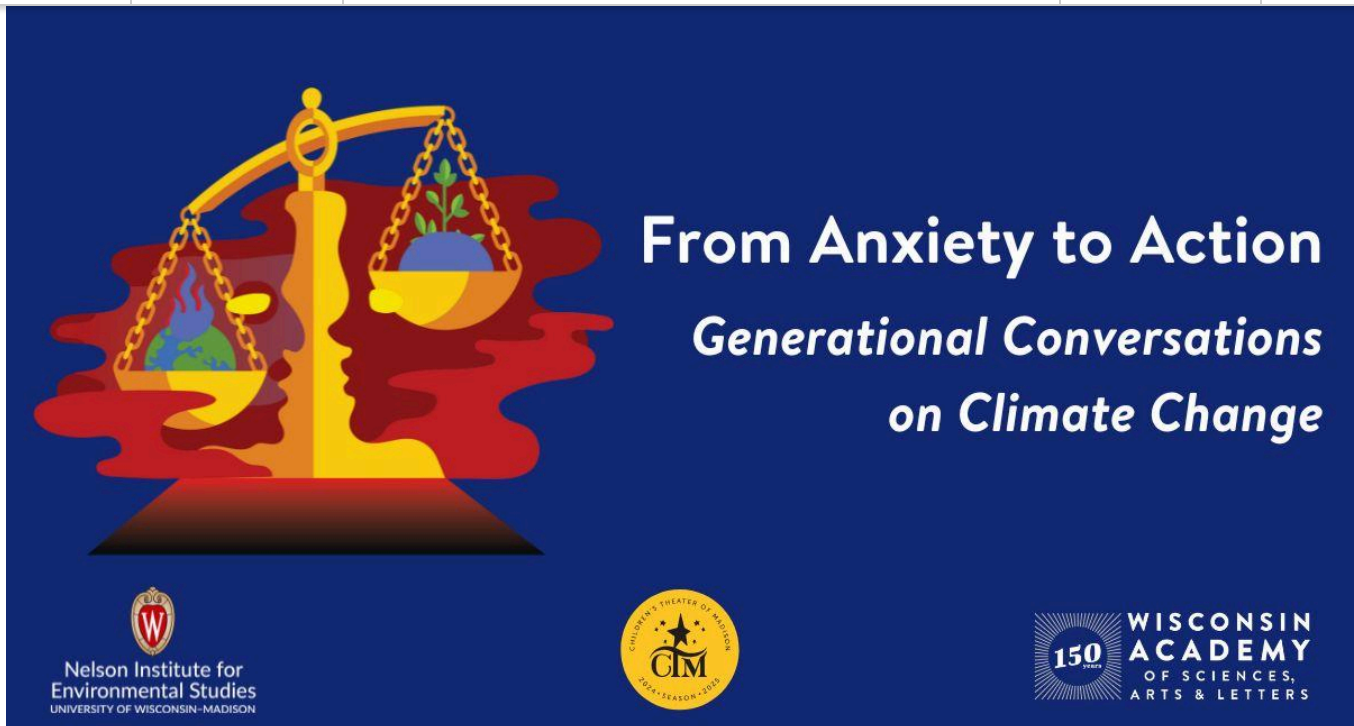
- **GOODMAN SOUTH MADISON
COLLEGE**
2439 PERRY ST
MADISON, WI
- **AURORA SINAI OUTPATIENT
HEALTH CENTER**
EDUCATION ROOM 1ST FL
1020 N. 12TH ST
MILWAUKEE, WI

**REGISTER
NOW**



Or visit link
registration
link [here](#)

10: UW & YOU Community Voices Conference: On **Saturday, May 10, from 10am-2pm**, learn about the power of community advisory boards, community engagement in action, and working to create an easy path to participate in research. This event is for community advisory board members and their guests to share about their work, learn from each other, and think about how to include more voices and perspectives of community members in UW work. [Register here](#) by May 2.



10: Join on **Saturday, May 10** for a powerful intergenerational panel discussion following the **2:30pm** matinee of *The Trials* at the MyArts Building in Madison, WI. Hosted by the Wisconsin Academy of Sciences, Arts & Letters, Children's Theater of Madison, and the Nelson Institute for Environmental Studies, this event will bring together voices from three generations to explore how different age groups are reacting to the climate crisis, and to reflect on the main themes of the play. [Click here to learn more.](#)

15: The 2025 Teaching and Learning Symposium builds on rich tradition by providing an opportunity to reflect on enduring values and discuss challenges and opportunities. This year's theme, "Engage and Inspire: The New College Classroom," highlights innovative teaching practices and technologies. Join in person on **Thursday, May 15**, at Union South. You can also join via livestream. [Click here to learn more.](#)

20: We welcome you to join us for the Global Health Institute's Global Health Tuesday Webinar on **Tuesday, May 20, from 9-10am (CST)**, when Linda Vakunta, Deputy Mayor of Madison, moderates a timely conversation on ***Cities, Climate Change, and Health***. [Click here to learn more](#) (see story above for more info).

DEADLINES ▼



SUMMER 2025 ASIALANG 475: MEDICAL CHINESE



ASIALANG 475: MEDICAL CHINESE

WITH SHUYANG YE, PH.D. CANDIDATE
MAY 19 – JUNE 15 | MTWR 9:30AM-12PM
room 6112 Sewell Social Sciences
QUESTIONS: sye47@wisc.edu

- This course counts for LAS Advanced level, Humanities breadth, 3 credits
- Consent of instructor is required to enroll, please email: sye47@wisc.edu
- This course counts for an advanced language course elective for the Chinese major or Chinese Professional Communication certificate

Enroll in Summer 2025 Course: Medical Chinese, ASIALANG 475: This course provides an opportunity for SMPH students/colleagues who would like to enhance their knowledge in Chinese in order to better communicate with Chinese-speaking patients in their clinical practice. Email the instructor, **Shuyang Ye** (sye47@wisc.edu) to learn more!

[Subscribe](#)[Past Issues](#)[Translate ▼](#)[RSS](#)

Intermediate & Advanced

SWAHILI

Intermediate & Advanced

YORUBA

One Year of Language Study in 8 Weeks
June 16 – August 8, 2025



**Funding
Available**



**Virtual Classes
for Credit**



**Accelerated
Pace**



**Proficiency
Driven**



**Wisconsin Intensive
Summer Language Institutes**
 UNIVERSITY OF WISCONSIN-MADISON

**APPLY
NOW**

Learn more at wisli.wisc.edu

Enroll in Summer 2025 Program: Apply now to study Swahili or Yoruba online at the intermediate-advanced level this summer! Synchronous, virtual classes run for four hours a day, Monday through Friday, 9am-2pm (CDT) with an hour break scheduled at 11am. Intermediate students earn eight UW–Madison college credits for the two semesters, and advanced students earn six credits. All students earn two transcript letter grades. Questions? Contact a program advisor at wisli@lpo.wisc.edu. [Click here to learn more.](#)

Enroll in Fall 2025 Course: Epidemiology and Global One Health, **POP HLTH 810**: 2 Credits; (October 20 – December 10; last 7 weeks of the semester); Monday and Wednesday: 1:20-3pm; WARF room 726 (Observatory and Walnut). This course examines the intersection of human, animal, and environmental health within the context of the Anthropocene—the era in which human activity is the dominant influence on climate and the environment. Drawing on the One Health framework, we will explore how globalization, ecological change, and human activity contribute to health disparities, the emergence of infectious diseases, and shifts in global public health priorities. Email the instructor, **Dr. Johnny Uelmen** (uelmen@wisc.edu) to learn more!

[Subscribe](#)[Past Issues](#)[Translate ▼](#)[RSS](#)

emphasis on projects in the arts and humanities that may not have access to other funding, as well as projects identified by campus leadership as priorities of the institution. The Trust also supports innovative or experimental projects that may subsequently be funded through traditional sources, interdisciplinary activities, and special projects that contribute to the university's knowledge base or provide distinctive learning experiences. It is recommended that grant requests be in the \$2,000 – \$10,000 range. Larger grants may be considered on a case-by-case basis. [Click here for more information](#) from the UW-Madison Office of the Provost.

APRIL

30: Applications for the UW Distinguished Research Fellows Program are due **Wednesday, April 30**. The UW Distinguished Research Fellows Program is designed to support outstanding postdoctoral trainees in interdisciplinary research areas related to [RISE-AI](#), [RISE-THRIVE](#), and [RISE-EARTH](#). The intent of this program is to support exceptional emerging scholars in collaborative research that spans two distinct units (schools, colleges and centers) at UW–Madison, and which synergizes distinct disciplinary approaches. [Click here to learn more and apply](#).

30: Applications for the Visiting Poverty Scholars Program are due **Wednesday, April 30**. The program funds up to four poverty scholars per year to visit the Institute for Research on Poverty or any one of its [U.S. Collaborative of Poverty Centers \(CPC\)](#) partners for one week in order to interact with its resident faculty, present a poverty-related seminar of their choosing, and become acquainted with staff and resources. Applicants must be PhD-holding, U.S.-based poverty scholars at any career level who are from economically disadvantaged backgrounds. [Click here to learn more and apply](#).

30: Applications for the Professional Development Training Series on Poverty and Economic Mobility Research are due **Wednesday, April 30**. Proposals are invited from individuals who will be enrolled in a PhD program in the 2025–2026 academic year at a U.S. university. To be eligible, applicants must either be from an economically disadvantaged background or currently attending a university that is not designated as an R1. [Click here to learn more and apply](#).

MAY

15: The deadline for applications to the Draper Technology Innovation Fund (TIF) is May 15th. Draper TIF provides a mechanism to support the additional research often necessary to bring new concepts and inventions to the patent and licensing stage. The program goal is the eventual introduction of new products and processes into the marketplace for the public good. The targeted inventions must have already been disclosed to and accepted by the Wisconsin Alumni Research Foundation (WARF) for patenting or similar intellectual property protection. Funds can be used to support efforts to enhance the scope or patentability of inventions and assist with their potential licensing to the commercial sector. Examples of research activities include prototype development, expansion of studies to include additional exemplary demonstrations, preparation of samples for evaluation, and application testing. This program is administered in partnership between Discovery to Product and the Wisconsin Alumni Research Foundation. [Click here to learn more and apply](#).

[Subscribe](#)[Past Issues](#)[Translate ▼](#)[RSS](#)

+ **UW–Madison’s Office of Federal Relations** is coordinating the campus response to emerging federal updates, including executive orders, agency directives and congressional activity. Representatives from across campus, including Strategic Communication, the Provost’s Office, the Office of Legal Affairs, the Office of the Vice Chancellor for Research, Student Affairs, the Office of Human Resources, the International Division, the Division of Enrollment Management, UWPD, and additional offices, are monitoring these issues and coordinating communication. [Click here for up-to-date information on campus responses.](#)

+ **ICYMI: From UW–Madison News:** Each year, the University of Wisconsin–Madison recognizes outstanding academic staff members who have excelled in leadership, public service, research and teaching. One such staff member is Betsy Teigland, Programs Coordinator, Office of Global Health, UW School of Medicine and Public Health. In nearly 20 years of working with global health programs, Teigland has been that “secret sauce” that has kept so many things running smoothly. Most recently, she played a crucial role in the 20th Global Health Symposium in early April, which was co-hosted by UW–Madison’s Global Health Institute, the Office of Global Health at SMPH, and CALS Global. [Click here for information on the 2025 Academic Staff Excellence Award winners.](#)

+ **ICYMI: From 1050 Bascom:** On the most recent episode of 1050 Bascom, hosts were honored to welcome Ambassador John E. Lange, a distinguished diplomat, global health leader, and proud alumni of the University of Wisconsin-Madison. In the episode, Ambassador Lange shared insights from his diplomatic career, his work in global health, and the importance of public service in addressing global challenges. [Ambassador Lange](#) is also a member of GHI’s Board of Visitors. [Click here to stream "Global Health and Public Policy with Ambassador John E. Lange" on SoundCloud.](#)

+ **ICYMI: From WHO:** The Global Outbreak Alert and Response Network (GOARN), an initiative coordinated by the World Health Organization (WHO), marked its 25th anniversary on April 28th. "Since its inception in April 2000, the network has been at the forefront of the global fight against health emergencies. By leveraging the expertise of global partners – facilitating alerts, deploying rapid support capacities, and strengthening capacities – it has significantly enhanced country-level operations and strengthened regional development, playing a critical role in health preparedness and response." [Click here for the full news release.](#)

If you'd like to receive our weekly newsletter, [please use this link.](#)

The Global Health Institute sends Tuesday updates to let you know about GHI and campus events and opportunities that foster deeper understanding of the complex determinants of health and disease for people, animals and ecosystems. *To submit global health related events or reading suggestions in GHI's Events+, send them to communications@ghi.wisc.edu by noon on Fridays.*

[Learn more about the Global Health Institute at ghi.wisc.edu.](#)



Facebook



Twitter



LinkedIn



Instagram



Website

[Subscribe](#)

[Past Issues](#)

[Translate ▼](#)

[RSS](#)

