

[Subscribe](#)

[Past Issues](#)

[Translate ▼](#)

[RSS](#)

[View this email in your browser](#)



**Global Health Institute**  
UNIVERSITY OF WISCONSIN-MADISON



**EVENTS +**

**CAN'T MISS IN THIS ISSUE ▼**

**GHI DIRECTOR TO STEP DOWN JUNE 30TH**

**STORY: 20TH GLOBAL HEALTH SYMPOSIUM SHARES  
WHY GLOBAL HEALTH NETWORKS MATTER**

**MAY 20: GLOBAL HEALTH WEBINAR  
CITIES, CLIMATE CHANGE, & HEALTH**

**DR. JORGE OSORIO STEPS DOWN AS GHI DIRECTOR**

[Subscribe](#)[Past Issues](#)[Translate ▼](#)[RSS](#)

With deep appreciation for his service, the Global Health Institute (GHI) shares the news that GHI Director Dr. Jorge Osorio will be stepping down from his role at the end of the fiscal year, June 30, 2025.

The full announcement is available [on our website](#). GHI continues to be in close communication with the Provost's Office as we plan for the next phase of leadership and establish a new academic home.

We thank Dr. Osorio for his vision and elevating GHI's profile as a leader in global health on campus and beyond.

## STORY: 20TH GLOBAL HEALTH SYMPOSIUM ▼



[Subscribe](#)[Past Issues](#)[Translate ▼](#)[RSS](#)

[Health Networks Matter](#). More than 200 registered guests for the hybrid event met both online and at the H.F. DeLuca Room in the Discovery Building to hear engaging discussions, view multidisciplinary global health posters from across campus, and network. The milestone event was co-hosted by the [Global Health Institute](#) (GHI), [Office of Global Health at the UW School of Medicine and Public Health](#) (OGH at SMPH), and [CALS Global](#).

[Click here for the full event recap.](#)

## REGISTER FOR GHI'S MAY 20 WEBINAR, "CITIES, CLIMATE CHANGE, & HEALTH" ▼

**Global Health Institute**  
UNIVERSITY OF WISCONSIN-MADISON

**CITIES, CLIMATE CHANGE, & HEALTH**

**GLOBAL HEALTH TUESDAY WEBINAR**  
TUESDAY, MAY 20, 9-10AM (CST)

**Linda Vakunta**  
Deputy Mayor,  
City of Madison

**Eduardo Santana Castellón**  
Director, Museum of  
Environmental  
Sciences, and  
Emeritus Professor,  
University of  
Guadalajara

**Marta Rofin Serrà**  
Founder & CEO,  
Healthy Cities;  
Director, "Urban  
Planning & Health,"  
Polytechnic  
University of  
Catalonia

**Carlos Moreno**  
Professor,  
IAE Paris Sorbonne,  
University of Paris,  
Author,  
*The 15-Minute City:  
A Solution to  
Saving Our Time  
& Our Planet*

Visit [ghi.wisc.edu](http://ghi.wisc.edu)  
For more information

We welcome you to join us for the Global Health Institute's Global Health Tuesday Webinar on **Tuesday, May 20, from 9-10am (CST)**, when Linda Vakunta, Deputy Mayor of Madison, moderates a timely conversation on **Cities, Climate Change, and Health**.

Vakunta leads the discussion with Eduardo Santana Castellón, Director, Museum of Environmental Sciences, and Emeritus Professor, University of Guadalajara; Marta Rofin Serrà, Founder & CEO, Healthy Cities, and Director, "Urban Planning & Health," Polytechnic University of Catalonia; and Carlos Moreno, Professor, IAE Paris Sorbonne, University of Paris, and Author, *The 15-Minute City: A Solution to Saving Our Time & Our Planet*.

[Click here to learn more.](#) Please register here using this [Zoom registration link](#).

## MARK YOUR CALENDAR ▼

[Subscribe](#)[Past Issues](#)[Translate ▼](#)[RSS](#)

**NOW-29:** Save the date for Earth Fest, **April 21-29**. Earth Fest at the University of Wisconsin–Madison brings together all things environment and sustainability and unite our campus over the one resource and interest we all share: our world. Earth Fest is for all members of the Badger community: from students to alumni, faculty to friends, and seasoned experts to future Badgers. [Click here for to learn more.](#)



Subscribe

Past Issues

Translate ▼

RSS



# UW MADISON CANNABIS CONFERENCE

*April 22, 2025*

9am-5pm

Union South, Madison WI



Schedule and Registration

- Health & Medicine
- Business & Design
- Policy & Regulation
- Agriculture

**TODAY:** The first annual UW–Madison Cannabis Research Conference, *"From Seed to Society: Cultivating Connections,"* is **TODAY, April 22, 9am-5pm**, at Union South. This inaugural event is presented by the UW College of Agricultural and Life Sciences, School of Human Ecology, School of Pharmacy, Center for Tobacco Research and Intervention, and Global Health Institute. The UW–Madison Cannabis Conference is a dynamic, multi-disciplinary event aimed at expanding awareness, fostering knowledge exchange, and bridging gaps in cannabis research, education, and policy. Featuring four key sessions—Health & Medicine, Agriculture, Business & Design, and Policy & Regulation—the conference brings together experts, industry leaders and policymakers to explore the latest developments in cannabis and industrial hemp. Please see the [website](#) for information about speakers and themes. [Registration](#) is free and open to UW–Madison faculty, staff, and researchers passionate about or working in the rapidly evolving cannabis landscape.

**23-24:** The theme for the 7<sup>th</sup> convening and two day, in-person, *Our City of Nations* conference at the [Milwaukee School of Engineering](#) on **Wednesday and Thursday, April 23-24**, is *Stronger Together: 10 Years of OCON and an Eye on the Future*. Conference registration and active participation requests are now open. [Click here to register](#).

**24:** On **Thursday, April 24, from 6-7:30pm**, in the WI Idea Lounge, Pyle Center, join for a special evening with Jay Michaelson—renowned writer, journalist, rabbi, meditation teacher, and scholar of religion. Michaelson, an author who has written and published ten books and 1,500 articles, will lead a compelling discussion: *Psychedelics, Sufism, and Kabbalah: Mystical Techniques, Spiritual Paths*. Kosher appetizers will be provided by Adamah Neighborhood Kitchen for the first 100 guests. This event is open to all—come for the conversation, stay for the community. The event is sponsored by the Multicultural Student Center and the Center for Interfaith Dialogue, in partnership with the Office of Student Affairs. Contact: 608-890-1275, [alex.markwald@wisc.edu](mailto:alex.markwald@wisc.edu) for more information.

[Subscribe](#)[Past Issues](#)[Translate ▼](#)[RSS](#)


Union South. The annual Undergraduate Symposium showcases undergraduate creativity, achievement, research, service-learning, and community-based research from all areas of study at UW–Madison including the humanities, arts, biological sciences, physical sciences, social sciences, and computer data and information sciences. [Click here to learn more.](#)

**Real Talk: Navigating Life Post Graduation**

**Tuesday, April 29 | 4–6 PM**  
**Memorial Union (See TITU)**

Join us for a presentation from the School of Human Ecology Advising and Career Center and a panel discussion from recent UW–Madison graduates.

*Free pizza and notebook portfolios (first come, first served)*

 **UHS** | University Health Services  
UNIVERSITY OF WISCONSIN-MADISON

**29:** Join UHS Mental Health Services and the School of Human Ecology Advising & Career Center on **Tuesday, April 29, from 4-6pm**, for a presentation and panel discussion with recent UW–Madison alumni about their transition from college to life after graduation. Get tips and insights to help you navigate your next chapter. Free pizza and notebook portfolios (while supplies last). [Click here to learn more.](#)

[Subscribe](#)[Past Issues](#)[Translate ▼](#)[RSS](#)

# Toast to the Tassels: Celebrating Current & Future Friendships

Wednesday, April 30 | 4–6PM  
Wolf Teaching Kitchen, Bakke

Join UHS Mental Health Services for  
mocktail making and learn how to  
build community post-graduation.

*Free mocktail recipe book!*



**UHS** | University  
Health Services  
UNIVERSITY OF WISCONSIN-MADISON  
608-265-5600 | uhs.wisc.edu

**30:** Join UHS Mental Health Services on **Wednesday, April 30, from 4-6pm**, for a mocktail and mingle celebration! Make your own mocktails and learn practical strategies to stay connected and build new friendships after graduation. Exclusive mocktail recipe book giveaway! [Click here to learn more.](#)

**MAY**



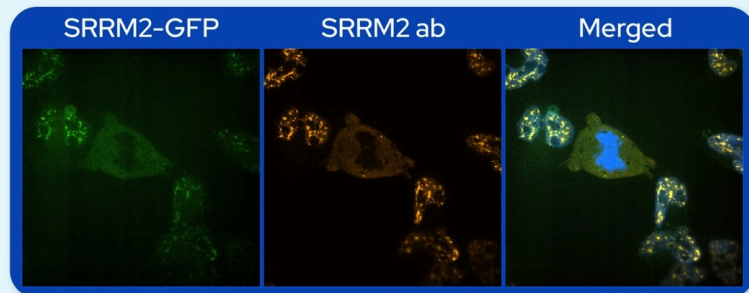
# Special Seminar

## Jeffrey Toretsky

Professor and Peds Hematology-Oncology Division Director  
Georgetown University



### Creating a drug for an 'undruggable' oncogene in Ewing sarcoma



**Thursday, May 1, 2:00 p.m.**

**Room 1211, DeLuca Biochemical Sciences Building**

*Please contact Brian Fox (bgfox@wisc.edu) with any questions.*



**Department of Biochemistry**  
COLLEGE OF AGRICULTURAL & LIFE SCIENCES  
UNIVERSITY OF WISCONSIN-MADISON

UW-Madison occupies ancestral Ho-Chunk land, a place the Ho-Chunk Nation has called Teejop since time immemorial.

1: Join the Department of Biochemistry for a Special Seminar by Jeffrey Toretsky on **Thursday, May 1, at 2pm**, with the topic of "Creating a drug for an 'undruggable' oncogene in Ewing sarcoma." [Click here to learn more.](#)



Subscribe

Past Issues

Translate ▼

RSS

# Caps & Conversations

**Thursday, May 1 | 4–6 PM**  
**Wheelhouse Studios**

Join UHS Mental Health Services to decorate your graduation cap and for a discussion about transitioning to post-grad life!

*Art materials will be provided at no cost.*  
 Don't forget your cap!



**1:** Join UHS Mental Health Services and Wheelhouse Studios on **Thursday, May 1, from 4-6pm**, to decorate your graduation cap and engage in a facilitated discussion about coping with transition and change. Art materials will be provided at no cost. Don't forget your cap! [Click here to learn more.](#)

**9-10:** Join 'Plant Sale for a good cause!' for veggies, herbs, annuals, perennials, natives, and some house plants **May 9 (12-5pm) and May 10 (8am-4:30pm)** at 230 S. Owen Drive. Proceeds support Kidlinks World. Kidlinks is a 50(c)3 non-profit organization with the mission of improving the lives of vulnerable children in Wisconsin and South Africa by forming partnerships with grass roots initiatives and supporting programs that serve the children on a daily basis. This year, they are also supporting Briarpatch Youth Services in Dane County. [Click here to learn more.](#)

[Subscribe](#)[Past Issues](#)[Translate ▼](#)[RSS](#)

# UW & YOU COMMUNITY VOICES IN MADISON & MILWAUKEE

Learn about community  
involvement in UW research

FREE event with lunch  
included



**SATURDAY MAY 10  
10AM-2PM**

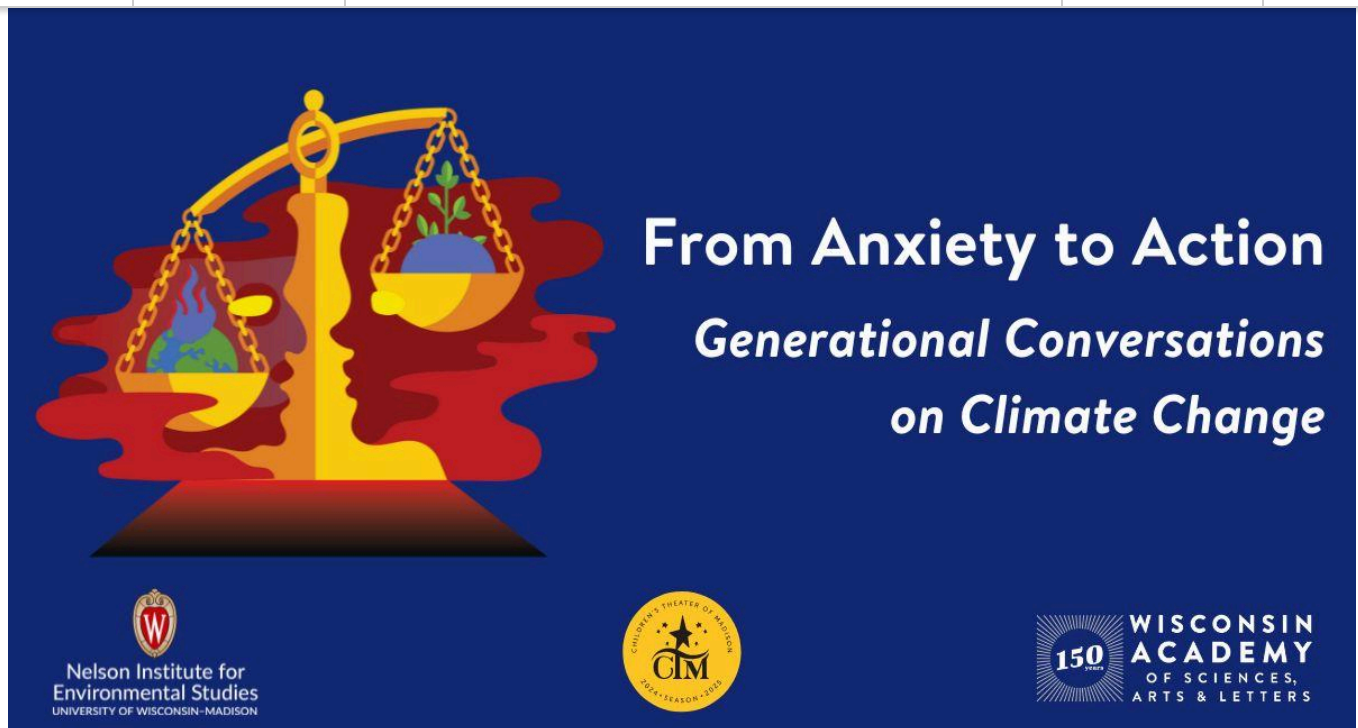
- **GOODMAN SOUTH MADISON  
COLLEGE**  
2439 PERRY ST  
MADISON, WI
- **AURORA SINAI OUTPATIENT  
HEALTH CENTER**  
EDUCATION ROOM 1ST FL  
1020 N. 12<sup>TH</sup> ST  
MILWAUKEE, WI

**REGISTER  
NOW**



Or visit link  
registration  
link [here](#)

**10: UW & YOU Community Voices Conference:** On **Saturday, May 10, from 10am-2pm**, learn about the power of community advisory boards, community engagement in action, and working to create an easy path to participate in research. This event is for community advisory board members and their guests to share about their work, learn from each other, and think about how to include more voices and perspectives of community members in UW work. [Register here](#) by May 2.



**10:** Join on **Saturday, May 10** for a powerful intergenerational panel discussion following the **2:30pm** matinee of *The Trials* at the MyArts Building in Madison, WI. Hosted by the Wisconsin Academy of Sciences, Arts & Letters, Children's Theater of Madison, and the Nelson Institute for Environmental Studies, this event will bring together voices from three generations to explore how different age groups are reacting to the climate crisis, and to reflect on the main themes of the play. [Click here to learn more.](#)

**15:** The 2025 Teaching and Learning Symposium builds on rich tradition by providing an opportunity to reflect on enduring values and discuss challenges and opportunities. This year's theme, "Engage and Inspire: The New College Classroom," highlights innovative teaching practices and technologies. Join in person on **Thursday, May 15**, at Union South. You can also join via livestream. [Click here to learn more.](#)

**20:** We welcome you to join us for the Global Health Institute's Global Health Tuesday Webinar on **Tuesday, May 20, from 9-10am (CST)**, when Linda Vakunta, Deputy Mayor of Madison, moderates a timely conversation on **Cities, Climate Change, and Health**. [Click here to learn more](#) (see story above for more info).

## DEADLINES ▼





# SUMMER 2025 ASIALANG 475: MEDICAL CHINESE



## ASIALANG 475: MEDICAL CHINESE

WITH SHUYANG YE, PH.D. CANDIDATE  
MAY 19 – JUNE 15 | MTWR 9:30AM-12PM  
room 6112 Sewell Social Sciences  
QUESTIONS: [sye47@wisc.edu](mailto:sye47@wisc.edu)

- This course counts for LAS Advanced level, Humanities breadth, 3 credits
- Consent of instructor is required to enroll, please email: [sye47@wisc.edu](mailto:sye47@wisc.edu)
- This course counts for an advanced language course elective for the Chinese major or Chinese Professional Communication certificate

**Enroll in Summer 2025 Course:** Medical Chinese, ASIALANG 475: This course provides an opportunity for SMPH students/colleagues who would like to enhance their knowledge in Chinese in order to better communicate with Chinese-speaking patients in their clinical practice. Email the instructor, **Shuyang Ye** ([sye47@wisc.edu](mailto:sye47@wisc.edu)) to learn more!



Intermediate &amp; Advanced

**SWAHILI**

Intermediate &amp; Advanced

**YORUBA**

One Year of Language Study in 8 Weeks  
**June 16 – August 8, 2025**



**Funding  
Available**



**Virtual Classes  
for Credit**



**Accelerated  
Pace**



**Proficiency  
Driven**



**Wisconsin Intensive  
Summer Language Institutes**  
 UNIVERSITY OF WISCONSIN-MADISON

**APPLY  
NOW**

***Learn more at [wisli.wisc.edu](https://wisli.wisc.edu)***

**Enroll in Summer 2025 Program:** Apply now to study Swahili or Yoruba online at the intermediate-advanced level this summer! Synchronous, virtual classes run for four hours a day, Monday through Friday, 9am-2pm (CDT) with an hour break scheduled at 11am. Intermediate students earn eight UW–Madison college credits for the two semesters, and advanced students earn six credits. All students earn two transcript letter grades. Questions? Contact a program advisor at [wisli@lpo.wisc.edu](mailto:wisli@lpo.wisc.edu). [Click here to learn more.](#)

**Enroll in Fall 2025 Course:** Epidemiology and Global One Health, **POP HLTH 810**: 2 Credits; (October 20 – December 10; last 7 weeks of the semester); Monday and Wednesday: 1:20-3pm; WARF room 726 (Observatory and Walnut). This course examines the intersection of human, animal, and environmental health within the context of the Anthropocene—the era in which human activity is the dominant influence on climate and the environment. Drawing on the One Health framework, we will explore how globalization, ecological change, and human activity contribute to health disparities, the emergence of infectious diseases, and shifts in global public health priorities. Email the instructor, **Dr. Johnny Uelmen** ([uelmen@wisc.edu](mailto:uelmen@wisc.edu)) to learn more!

[Subscribe](#)[Past Issues](#)[Translate ▼](#)[RSS](#)

**30:** Applications for the UW Distinguished Research Fellows Program are due **Wednesday, April 30**. The UW Distinguished Research Fellows Program is designed to support outstanding postdoctoral trainees in interdisciplinary research areas related to [RISE-AI](#), [RISE-THRIVE](#), and [RISE-EARTH](#). The intent of this program is to support exceptional emerging scholars in collaborative research that spans two distinct units (schools, colleges and centers) at UW–Madison, and which synergizes distinct disciplinary approaches. [Click here to learn more and apply.](#)

**30:** Applications for the Visiting Poverty Scholars Program are due **Wednesday, April 30**. The program funds up to four poverty scholars per year to visit the Institute for Research on Poverty or any one of its [U.S. Collaborative of Poverty Centers \(CPC\)](#) partners for one week in order to interact with its resident faculty, present a poverty-related seminar of their choosing, and become acquainted with staff and resources. Applicants must be PhD-holding, U.S.-based poverty scholars at any career level who are from economically disadvantaged backgrounds. [Click here to learn more and apply.](#)

**30:** Applications for the Professional Development Training Series on Poverty and Economic Mobility Research are due **Wednesday, April 30**. Proposals are invited from individuals who will be enrolled in a PhD program in the 2025–2026 academic year at a U.S. university. To be eligible, applicants must either be from an economically disadvantaged background or currently attending a university that is not designated as an R1. [Click here to learn more and apply.](#)

## FOOD FOR THOUGHT

**+ ICYMI: From UW–Madison News:** "University of Wisconsin–Madison researchers are using augmented reality to make the homes of older adults safer. Their innovation will not only streamline a sometimes clunky process but also support a more affordable and community-based approach that can reach more people." [Click here for the full news release.](#)

**+ ICYMI: From UW–Madison News:** "On Thursday, April 17, a crowd of several hundred students, staff, faculty, university leaders, alumni and dignitaries kicked off construction of the University of Wisconsin–Madison College of Engineering's new building at a ceremonial groundbreaking event." [Click here for the full news release.](#)

**+ ICYMI: From WHO:** "The World Health Organization (WHO) issues warning on health service disruptions reported in 70% of its surveyed country offices as a result of sudden suspensions and reductions in official development assistance (ODA) for health. The findings, based on rapid WHO assessment of the fast-evolving situation, raise concern for potentially deeper and prolonged effects on health systems and services across the world, especially in vulnerable and fragile settings." [Click here for the full news release.](#)

If you'd like to receive our weekly newsletter, [please use this link.](#)

The Global Health Institute sends Tuesday updates to let you know about GHI and campus events and opportunities that foster deeper understanding of the complex determinants of health and disease for people, animals and ecosystems. *To submit global health related events or*

Subscribe	Past Issues		Translate ▼	RSS
-----------	-------------	--	-------------	-----

Learn more about the Global Health Institute at [ghi.wisc.edu](https://ghi.wisc.edu).

 Facebook

 Twitter

 LinkedIn

 Instagram

 Website

Copyright © 2025 UW-Madison Global Health Institute, All rights reserved.

[unsubscribe from this list](#) [update subscription preferences](#)

