

[View this email in your browser](#)



Global Health Institute
UNIVERSITY OF WISCONSIN-MADISON



EVENTS +

CAN'T MISS IN THIS ISSUE ▼

REGISTER NOW!

**2025 GLOBAL HEALTH SYMPOSIUM ON APR 8TH:
*WHY GLOBAL HEALTH NETWORKS MATTER***

ICYMI: WOMEN IN SCIENCE WEBINAR

APPLY NOW: 2025 HENRY ANDERSON III GRADUATE AWARD

**TWO WEEKS AWAY (3/11):
CONNECTING HEALTH THROUGH IMPACTFUL STORYTELLING WEBINAR**

2025 GLOBAL HEALTH SYMPOSIUM APRIL 8, 4-8PM ▼

NETWORKS MATTER CALS Global

Keynote Speaker:
Mrs. Suchitra Ella, Bharat Biotech

Fireside Chat Panel:
*White-nose Syndrome
in Bats Connection
to One Health*

Moderated by :
GHI Director Jorge Osorio
with high-level field experts

**April 8, 2025
4-8pm**

Discovery Building
330 N. Orchard St.
A Hybrid Event
Faculty, Staff, Students, Partners, &
Community Welcome

**Registration
& poster info:**



**20th
Global Health
Symposium**

University of Wisconsin-Madison
April 8, 2025

Enjoy engaging speakers,
poster presentations,
networking, & refreshments!

Mark your calendars for **Tuesday, April 8th, from 4-8pm**, as UW–Madison’s [Global Health Institute](#) (GHI), [Office of Global Health in the School of Medicine and Public Health](#), and [CALS Global](#) invite you to attend the 20th Global Health Symposium: [Why Global Health Networks Matter](#). The event will take place at the Discovery Building, 330 N. Orchard Street, and features keynote speaker, Mrs. Suchitra Ella from Bharat Biotech, posters from across campus showcasing global health projects, and a fireside chat panel discussing, ***White-nose Syndrome in Bats Connection to One Health***.

All are welcome to attend this free event, but registration is required. Visit the [GHI website](#) for info, registration, and poster abstract application (**due March 17th**).

ICYMI: WOMEN IN SCIENCE WEBINAR ▼

 **Global Health Institute**
UNIVERSITY OF WISCONSIN-MADISON

WOMEN IN SCIENCE

GLOBAL HEALTH TUESDAY WEBINAR
TUESDAY, FEBRUARY 25, 9-10AM (CST)



Kristin Long
Associate Professor
of Surgery,
UW–Madison



Caroline Zellmer
Senior Program
Manager,
Foresite Labs



Zuzana Burivalova
Assistant Professor,
Forest and Wildlife
Ecology,
UW–Madison

 Visit ghi.wisc.edu
For more information



Science earlier today for GHI's Global Health Tuesday Webinar Series. Long led the discussion with Caroline Zellmer, Senior Program Manager, Foresite Labs, and Zuzana Burivalova, Assistant Professor, Forest and Wildlife Ecology, UW–Madison. [Click here to learn more](#) (recording coming soon).

2025 HENRY ANDERSON III GRADUATE AWARD

APPLICATIONS OPEN THROUGH MARCH 2 ▼

The Henry Anderson III Graduate Award application is open! Applications will be accepted through **Sunday, March 2, at 11:59pm (CST)**. The Henry Anderson III Graduate Student Award in Environmental and Occupational Public Health from the Global Health Institute (GHI) supports UW-Madison graduate or health professional students interested in pursuing research in the areas of environmental and occupational public health—that is the study of the role of environmental or occupational factors as determinants of health. [Click here to learn more and apply.](#)

TWO WEEKS AWAY: GHI'S MARCH WEBINAR,

"CONNECTING HEALTH THROUGH IMPACTFUL STORYTELLING" ▼



The poster is for the Global Health Institute's Global Health Tuesday Webinar. It features a red background with a white 'W' logo for the University of Wisconsin-Madison. The title 'GLOBAL HEALTH TUESDAY WEBINAR' is in large white letters, with the date and time 'TUESDAY, MARCH 11, 10-11AM (CST)' below it. A dark grey banner at the top right says 'CONNECTING HEALTH THROUGH IMPACTFUL STORYTELLING'. Four speakers are listed with their photos: Sara McKinnon, Riley Ray Griffin, Apoorva Mandavilli, and Jamie Hansen. A QR code and the website 'ghl.wisc.edu' are at the bottom left. A partial image of Earth is on the right.

Global Health Institute
UNIVERSITY OF WISCONSIN-MADISON

CONNECTING HEALTH THROUGH IMPACTFUL STORYTELLING

GLOBAL HEALTH TUESDAY WEBINAR
TUESDAY, MARCH 11, 10-11AM (CST)

Sara McKinnon
Professor of Rhetoric, Politics & Culture, Communication Arts; and Faculty Director, LACIS, UW-Madison

Riley Ray Griffin
Technology Reporter, Bloomberg News

Apoorva Mandavilli
Science & Global Health Reporter, The New York Times

Jamie Hansen
Communications Manager, Stanford Center for Innovation in Global Health

Visit ghi.wisc.edu
For more information

We welcome you to join us for the Global Health Institute's Global Health Webinar on **Tuesday, March 11, 2025, from 10-11am (CST)**, when Sara McKinnon, Professor of Rhetoric, Politics & Culture, Communication Arts; and Faculty Director, LACIS, UW–Madison, moderates a timely conversation on *Connecting Health Through Impactful Storytelling*.

McKinnon leads the discussion with Riley Ray Griffin, Technology Reporter, *Bloomberg News*; Apoorva Manavilli, Science & Global Health Reporter, *The New York Times*; and Jamie Hansen, Communications Manager, Stanford Center for Innovation in Global Health.

[Click here to learn more.](#) If interested, [click here to register on Zoom.](#)

MARK YOUR CALENDAR 

FEBRUARY

ENGAGED SCHOLARS TALK

Co-Developing Research Agendas with Older Community Members

During this discussion, Madison Board of Older Adult Advisors (BOAA) members and their collaborators from the UW–Madison School of Nursing will share their process for identifying the research topics and questions that they feel would most improve older adults' health and healthcare, as well as the group's top research priorities.

Presenters: Joann Pritchett & Denice Morgan (BOAA); Kim Neuschel & Diane Farsetta (Nursing)



**Wed. Feb 26, 10:30am
Morgridge Center
(Red Gym)**



26: The Morgridge Center plans a series of workshops for faculty and staff, based on what Community-based Learning instructors have shared they would like more support with. On Wednesday, February 26, at 10:30am, the Center for Aging Research and Education (CARE) at the UW–Madison School of Nursing invites you to join an upcoming discussion with members of the Madison Board of Older Adult Advisors (BOAAs). The BOAAs are community advisory boards that have been organized and facilitated by CARE since 2022 and co-facilitated by the Wisconsin Network for Research Support (WINRS). With support from the Baldwin Wisconsin Idea Endowment, each BOAA recently developed their own community aging research agenda. During these discussions, BOAA members will share their process for identifying the research topics and questions that they feel would most improve older adult health and healthcare and what each group's top research priorities are. BOAA members will co-present with CARE and WINRS. [Click here for more info.](#)

26: Mark your calendar for a Wisconsin in Washington (WiW) information session. WiW will host three information sessions this Spring so students may learn more about the WiW program, including interning in Washington DC, completing classwork in domestic & international issues, and connecting with UW alumni & professionals. This is the first of three information sessions and is only a virtual option on **Wednesday, February 26, 11am-12pm**. You must [register via Zoom here](#). [Find more information on the WiW Internship Program here.](#)

Biology Colloquium

IMPACTS TO DINÉ ACTIVITIES WITH THE SAN JUAN RIVER AFTER THE GOLD KING MINE SPILL

On August 5th, 2015, 3 million gallons of acid mine drainage was accidentally discharged from the Gold King Mine near Silverton, Colorado into Cement Creek which is a tributary of the Animas and San Juan Rivers. The government-initiated risk assessment only assessed a recreational scenario (i.e. hiker drinking from the river), failing to recognize the deep connection of the Diné (Navajo) with the San Juan River for spiritual, cultural, and agricultural practices.

The 43 distinct activities between the Diné and the San Juan River highlight the importance for scientists and disaster responders to include cultural and spiritual factors when responding to environmental disasters and conducting a risk assessment in an Indigenous community.

**Thursday,
February 27th, 2025
3:30 – 4:30 PM
Noland Hall – Rm. 108
(250 N Mills St.)**



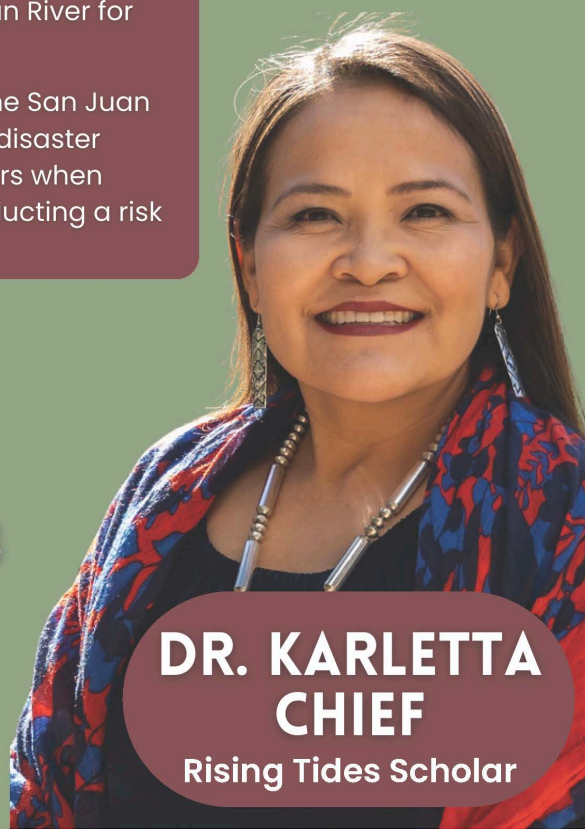
University Lectures
UNIVERSITY OF WISCONSIN-MADISON



Center for Limnology
University of Wisconsin-Madison



Water UW-Madison



**DR. KARLETTA
CHIEF**

Rising Tides Scholar

27: On **Thursday, February 27, at 3:30pm**, join the Center for Limnology as they co-sponsor guest speaker, Dr. Karletta Chief, at the Biology Colloquium at Noland Hall (250 N. Mills St.) Room 108. Dr. Karletta Chief (Diné) is a Professor & Extension Specialist in Environmental Science at the University of Arizona, director of the Indigenous Resilience Center, and lead for the NSF Indigenous Food, Energy, and Water Security and

technologies to address the lack of safe water, energy, and food security in Indigenous communities. Her presentation, *Impacts to Diné activities with the San Juan River after the Gold King Mine Spill*, will discuss the 2015 Gold King Mine spill as a case study about the importance for scientists and disaster responders to include cultural and spiritual factors when responding to environmental disasters and conducting a risk assessment in an Indigenous community. [Find more info here.](#)

27: On **Thursday, February 27, at 6:30pm**, the Havens Wright Center for Social Justice and the Latin American, Caribbean, and Iberian Studies Program are screening the film *Separated* at the Marquee Cinema in Union South. Film screening will begin at 6:30pm with an informal conversation to follow. Academy Award®-winning filmmaker Errol Morris incisively probes the darkest chapters in recent American history: family separations. Merging narrative vignettes of one migrant family's plight with hard-hitting interviews with government officials, Morris paints a jaw-dropping picture of the state-sponsored crisis of cruelty, as hundreds of families remain separated today. [Click here to learn more.](#)

Brewing Collaborations

New Date!



A GHI Coffee Mixer

NEW DATE: FRIDAY, FEBRUARY 28TH

9-10am

Medical Sciences Center, Room 1010

globalhealth@ghi.wisc.edu

28: Mark your calendar for a **NEW DATE: Friday, February 28, 9-10am**, for Brewing Collaborations at GHI. Join us for a cup of joe and a chance to network with global health colleagues as we percolate collaboration opportunities on campus and worldwide and share goals. This get together happens at the GHI office on UW-Madison's campus: Medical Sciences Center, 1300 University Avenue, Room 1010. [Please click here to RSVP](#). If you have any questions, please reach out to GHI at globalhealth@ghi.wisc.edu.

Women in Translation Circle (4W-WIT) SPRING 2025 PROGRAM



Flying Jewels and Other Lofty Insects by Jennifer Angus (USA, UW-Madison)

TRANSLATION ECOLOGIES: UNTHINKING THE BINARY

You are cordially invited to our 4W WIT event via Zoom:

<https://uwmadison.zoom.us/j/9069479801>

Paisajes de supervivencia y de lúcida belleza *Landscapes of Survival and Lucid Beauty*

Book presentation of *La parte profunda* (*The Deep Side*, 2018) and *Llamarada* (*Flare*, 2024)

A translation workshop and dialogue
with Argentinean Writer and Nave Visiting Scholar

Brenda Becette



Sponsored by: The 4W Initiative,
LACIS and The Department
of Spanish, and Portuguese

Friday, February 28
12:05 - 1:30 pm
Ingraham Hall # 336
UW-Madison

Free and open to the public



Latin American, Caribbean, and
Iberian Studies Program (LACIS)
INSTITUTE FOR REGIONAL AND INTERNATIONAL STUDIES
UNIVERSITY OF WISCONSIN-MADISON



4W
Women & Wellbeing in
Wisconsin & the World
UNIVERSITY OF WISCONSIN-MADISON

28: The 4W Women in Translation Circle invites all to join their public event [via Zoom](#) with their collaborator, winner of el Premio Ciudad y Naturaleza José Emilio Pacheco (2017), the Argentinian writer and Nave Visiting Scholar, Brenda Becette. The event will take place on **Friday, February 28, from 12:05-1:30pm CST** online and in Ingraham Room 336.

Jonathan (Jon) Arenberg, Chief Mission Architect for Science and Robotic Exploration. All are welcome to attend! This talk on **Monday, March 3 at 12pm, in 6515 Sterling Hall**, introduces the James Webb Space Telescope, NASA's Flagship astrophysics mission and the largest telescope ever designed, constructed and operating in space. Webb's science goals are presented and the flow of these science objectives into mission requirements and design is examined. The elements of the Webb are introduced, and their performance explained. The main engineering challenges in implementing this revolutionary observatory are explored. The presentation will conclude with a brief review of some of the exciting images returned from Webb's science operation. [Click here to learn more about WICOR.](#)

3: Warrior Princesses Strike Back: The Power of Advocacy, Culture, and Connectedness: On Monday, March 3, from 6:30-8pm, join this free event at the Wisconsin Institute for Discovery's De Luca Forum. Sarah Eagle Heart (Wanǂlí Šiná Winyan, Eagle Shawl Woman), Oglála Lakota, is an Emmy Award-winning social justice storyteller, entrepreneur, and philanthropic leader. Through her work, Sarah continues to champion Native American storytelling traditions, Indigenous experiences, and women's empowerment, inspiring audiences to connect, heal, and drive change. [Click here to learn more.](#)



FULBRIGHT WEEK

Learn about Fulbright & Fulbright-Hays programs for teaching English, research, and creative projects abroad. In-person and virtual events are open to students, faculty, staff, and alumni.



March 3-7, 2025

SCAN ME

Connect with current Fulbright recipients, past recipients, and Fulbright and commission staff to learn more, explore your options, and prepare for your Fulbright future!



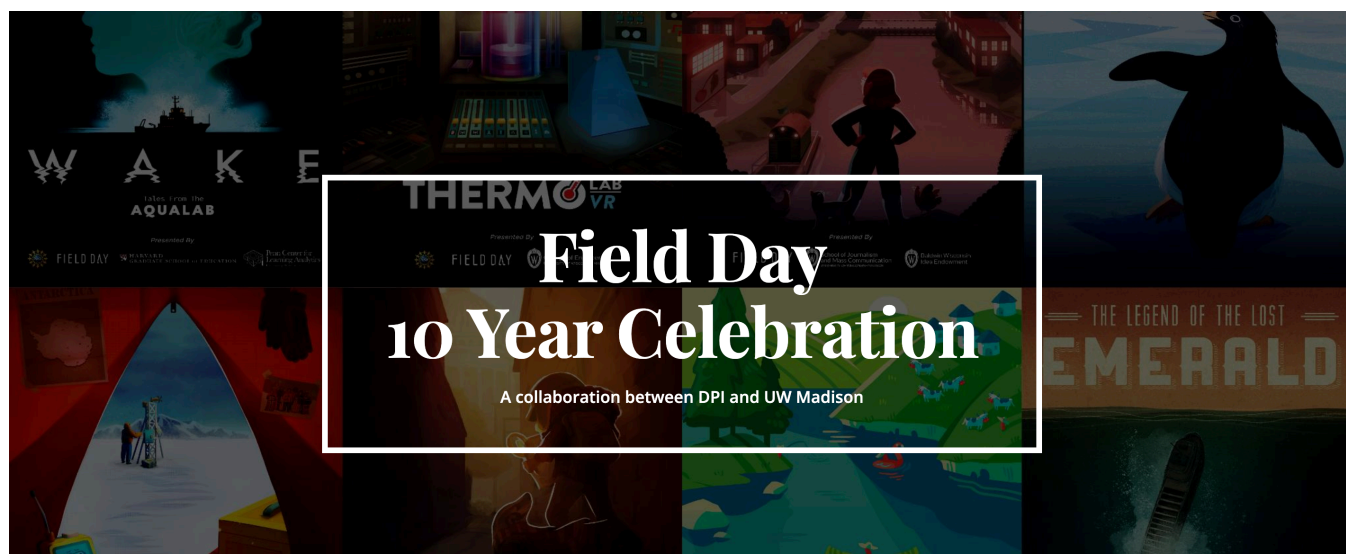


3-7: Fulbright Week 2025 will take place at UW–Madison the week of **March 3-7**. There will be a mix of both in-person and virtual events where interested students, alumni, faculty, and staff can learn more about the many Fulbright and Fulbright-Hays programs available as well as connect with current Fulbrighters, past recipients, and Fulbright and commission staff. [Click here to learn more.](#)

4: The [Wisconsin Center for Origins Research](#) (WICOR) will have two special seminars on March 3 (see listing above) & 4 from Dr. Jonathan (Jon) Arenberg, Chief Mission Architect for Science and Robotic Exploration. All are welcome to attend! As a technologically limited and observationally driven field, space science requires ever more sensitive hardware for advancement. To provide this motive force, instruments and missions must be conceived, designed, implemented and operated. This talk on **Tuesday, March 4 at 10am, in 4421 Sterling Hall**, will discuss the development paradigm for new science missions. They will focus on the critical nature of communication to the efficient and effective development of these systems. The challenge of communication across disciplines will be examined and discussed. Using examples

4: Women's Voices in Climate Change Activism in Colombia's Public Sphere: On **Tuesday, March 4, from 12-1pm**, join this installment of the LACIS Lunchtime Lecture Series from the Latin American, Caribbean and Iberian Studies Program. Presenter Dr. Adriana Angel is currently teaching at UW–Madison as a Tinker Visiting Professor of Communication for the Spring 2025 semester. The talk, focused on three of the most prominent environmental activists in Colombia—Vice President Francia Márquez, Congresswoman Isabel Cristina Zuleta, and Minister of the Environment Susana Muhamad — will explore how activist discourses of climate change and environmental justice in Colombia construct contesting ontologies of environmental protection and social change within the Colombian public sphere. [Click here to learn more and register on Zoom.](#)

4: Mark your calendar for a Wisconsin in Washington (WiW) Program information session. WiW will host three information sessions this Spring so students may learn more about the WiW program, including interning in Washington DC, completing classwork in domestic & international issues, and connecting with UW alumni & professionals. This is the second of three information sessions and is on **Tuesday, March 4, 4-5pm, at the Study Abroad Resource Center, 3rd Floor of the Red Gym.** [Registration](#) is encouraged, but not required (NetID required). [Find more information on the WiW Internship Program here.](#)

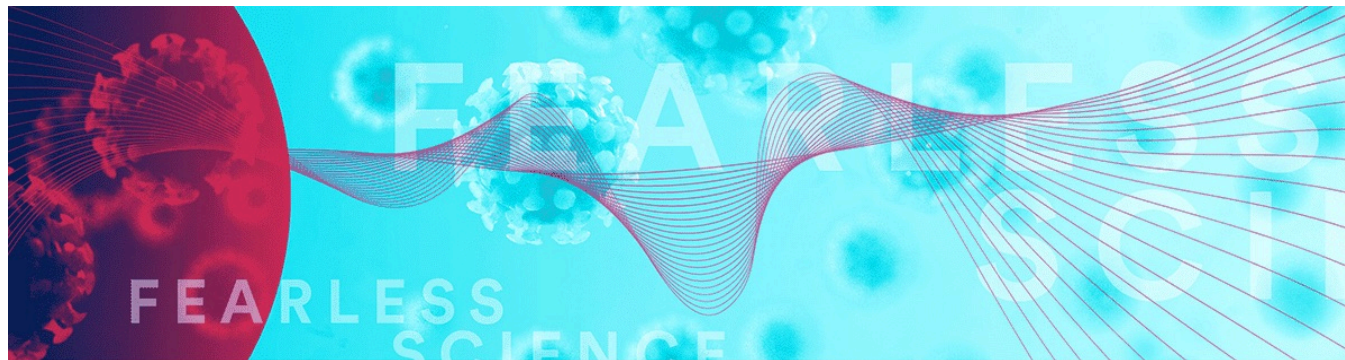


4: The Wisconsin Center for Education Research (WCER) in collaboration with the Wisconsin Department of Public Instruction (DPI) is proud to announce today the 10th anniversary of the Field Day Lab. This milestone event will be celebrated at UW–Madison's Memorial Union on **Tuesday, March 4, 2025, from 4:30 to 6pm.** Since its inception, [Field Day Lab](#), an award-winning game studio and research lab, has been a pioneering effort in educational outreach, leveraging the power of video games to enhance learning experiences. Developed by a dedicated team within WCER, in partnership with educators across the state and researchers across UW–Madison, these learning games are now used by thousands of students daily and millions annually. [Click here to learn more and RSVP.](#)



5: The Duke Global Health Institute hosts its Think Global panel, *Fighting a Hidden Pandemic: Strategies to Prevent Antimicrobial Resistance in Low-Resource Settings*, on **Wednesday, March 5, from 11am-12pm CST**. They will explore the root causes of antimicrobial resistance, as well as the tools and strategies that can be deployed to prevent it, especially in low-income settings. Panelists will discuss the role of AMR surveillance, faster diagnosis of infectious diseases to prevent unnecessary use of antibiotics, and antibiotic use in agriculture. [Click here to learn more and register on Zoom](#).

11: Mark your calendar for GHI's March Global Health Tuesday Webinar: Connecting Health Through Impactful Storytelling, **Tuesday, March 11, 10am (note the hour-later start time)**. Sara McKinnon, Professor, Rhetoric, Politics & Culture, Department of Communication Arts; Director, Latin American, Caribbean and Iberian Studies Program; Co-chair of the Human Rights Program (and GHI Advisory Committee Member), UW–Madison, moderates a timely discussion on impactful health storytelling with panelists Riley Ray Griffin, Reporter, *Bloomberg News*; Apoorva Mandavilli, Science and Global Health Reporter, *The New York Times*; and Jamie Hansen, Stanford Global Health Communications Manager. (see story above for more info)



17: Shaping the Future of Women's Health: Insights and Innovations: On **Monday, March 17, from 7-8pm (CST)**, the

between certain viral infections and gynecological cancers, present innovative approaches to identifying and preventing preterm birth, and explore how access and social factors influence health outcomes. The panel includes Morgridge Institute Investigators Dr. Melissa Skala and Dr. Megan Spurgeon, and UW–Madison Associate Professor Dr. Noelle LoConte. Reception to follow. A virtual broadcast will also be available. [Click here to learn more and register.](#)

19-20: Showcase your work at the Data Science Research Bazaar, **Wednesday and Thursday, March 19-20**, at the Discovery Building. Researchers, students and professionals at all levels of expertise are invited to apply to showcase their work. Proposals are sought for lightning talks, posters, workshops and interactive discussions. While this year's theme focuses on artificial intelligence and machine learning in research, submissions from all areas of data science and computational work are encouraged. [Learn more and apply by Jan 15.](#)

APRIL

6: Join UW Health's Carbone Cancer Center Open House on **Sunday, April 6, from 12-4pm**, at the Health Sciences Learning Center (HSLC) for science, giveaways, Bucky, Babcock ice cream, and more. The event is free and open to all ages, and no registration is required. Join for special movie screenings and expert speaker panels. [Click here to learn more.](#)

7: The Wisconsin Idea Conference is a one-day event on **Monday, April 7**, that brings together academics, service providers, community leaders, students, and others interested in fostering partnerships that advance meaningful impacts within the community and state. This year's conference will focus on the concept of *Exchange* – together, attendees explore ways to collaborate for positive change in nearby communities and across the state, build new relationships, and exchange ideas and resources to innovate solutions for the challenges facing nearby communities. [Click here to learn more.](#) If interested, [click here to register.](#)

8: Mark your calendars for **Tuesday, April 8th, 4-8pm**, as UW–Madison's Global Health Institute (GHI), Office of Global Health in the School of Medicine and Public Health (SMPH), and CALS Global invite you to attend the 20th Annual Global Health Symposium: ***Why Global Health Networks Matter***. The event will take place at the Discovery Building and features a keynote speaker, posters from across campus showcasing global health projects, and panel discussing ***White-nose Syndrome in Bats Connection to One Health***. [Click here to learn more](#) (and see story above).

8-9: Save the date to join the University of Wisconsin Organic Collaborative for Harvest of Ideas 2.0 "Organics as a Solution to Global Challenges." The event will be held at the Pyle Center on **Tuesday and Wednesday, April 8 and 9**. This event will bring together domestic and international researchers, farmers, and policy experts to discuss ways to advance organic priorities. [Information about registration will be shared when available.](#)

WGSC 2025 Conference

Embodying Feminism:

Calling In, Calling Out, Calling to Action

10-12: The 2025 WGSC Spring Conference, "*Embodying Feminism: Calling In, Calling Out, Calling to Action*" will take place in-person on **Thursday to Saturday, April 10-12**. Join for a keynote and several concurrent sessions with high-level panelists. [Click here to learn more.](#)

16: Mark your calendar for a Wisconsin in Washington (WiW) Program information session. WiW will host three information sessions this Spring so students may learn more about the WiW Program, including interning in Washington DC, completing classwork in domestic & international issues, and connecting with UW alumni & professionals. This is the third of three information sessions and is on **Wednesday, April 16, 10-11am, at the Study Abroad Resource Center, 3rd Floor of the Red Gym**. [Registration](#) is encouraged, but not required (NetID required). [Find more information on the WiW Internship Program here.](#)

21-29: Save the date for Earth Fest, **April 21-29**. Earth Fest at the University of Wisconsin–Madison will bring together all things environment and sustainability and unite our campus over the one resource and interest we all share: our world. Dive into groundbreaking research or dig in the dirt at community gardens. Sift and winnow the latest research or

to future Badgers. [Click here for more info.](#)

23-24: The theme for the 7th convening and two day, in-person, *Our City of Nations* conference at the [Milwaukee School of Engineering](#) on **Wednesday and Thursday, April 23 - 24**, is *Stronger Together: 10 Years of OCON and an Eye on the Future*. Conference registration and active participation requests are now open. [Click here to register.](#)

25: The 2025 UW–Madison Undergraduate Symposium will be held from **9:30am to 4:15pm on Friday, April 25**, at Union South. The annual Undergraduate Symposium showcases undergraduate creativity, achievement, research, service-learning, and community-based research from all areas of study at UW–Madison including the humanities, arts, biological sciences, physical sciences, social sciences, and computer data and information sciences. [Click here to learn more.](#)

DEADLINES ▼

FEBRUARY

25: Deadline to submit proposals to the N+1 Institute Reverse Pitch Competition is **TODAY, February 25**. Many regions of the world still lack access to advanced medical facilities and skilled physicians. The rise of IoT (Internet of Things) and global connectivity offers a promising solution by enabling the remote collection, access, and management of clinical data. However, to realize this vision, practical challenges such as security, connection reliability, equipment deployment, ease of use and overall cost to deliver must be addressed. While providing care to underserved regions and people, the vast volume of clinical data presents an incredible opportunity for additional research to improve healthcare for all. Pitches should propose a novel and innovative solution to bridge these gaps and deliver healthcare without boundaries. [Click here to learn more and submit a proposal.](#)

MARCH

1: Deadline to submit Student Engagement Grants is **Saturday, March 1**. Each year the Lakeshore Nature Preserve awards several Student Engagement Grants of up to \$1,000 each to facilitate the use of the Preserve as a resource for education among UW undergraduates. Any student, faculty, or staff member at UW–Madison may apply. Groups of individuals may submit a proposal as a team. Every individual or team must have at least one faculty or staff member, who is expected to play an active role in overseeing the project. [Click here to learn more and apply.](#)

2: Application deadline for the Henry Anderson III Graduate Awards at the UW–Madison Global Health Institute is **March 2, at 11:59pm (CST)**. The Henry Anderson III Graduate Student Award in Environmental and Occupational Public Health from the Global Health Institute (GHI) supports UW-Madison graduate or health professional students interested in pursuing research in the areas of environmental and occupational public health—that is the study of the role of environmental or occupational factors as determinants of health (**See story above**). [Click here to learn more and apply.](#)

Activities is **Monday, March 3**. The Office of the Provost offers awards to recognize the important role mentors play in fostering undergraduates' intellectual, personal and professional growth through participation in high-impact practices including research, scholarly and creative endeavors. These awards provide faculty members, groups of mentors, academic staff, post-doctoral fellows and graduate students with recognition for their excellence in mentoring undergraduates and their contribution to students' [Wisconsin Experience](#). [Click here to learn more and nominate](#).

3: Deadline to apply for 4W Innovation Grants for Faculty and Staff Is Monday, March 3, at 5pm (CST). These grants are provided as general support—which can be used toward summer salary, course buy out, or other arrangement with school or department—to allow a faculty or academic staff member to devote time to develop a key initiative related to gender and wellbeing. Projects should align with the vision and core values of the 4W program, and should have a research-to-action focus that aims to enhance gender equity in communities locally or globally. Such projects should also employ gender analyses and/or use an intersectional feminist lens to address equity for all. Applications are open to all faculty, instructors, and action researchers. 4W anticipates awarding grants of up to \$7,500 each. The 4W Innovation Grant was established with support from the Women's Philanthropy Council. [Find more information on the 4W grants page here](#).

3: Deadline to apply for 4W Engagement Grants for Emerging Scholars Is Monday, March 3, at 5pm (CST). These grants are intended to flexibly support graduate students in any relevant discipline who are engaged in work related to gender and wellbeing. These grants may be used for project expenses or travel related to community-based research or practice, including internships, independent study projects, and pre-dissertation or prethesis groundwork. Projects should have a research-to-action focus aimed at enhancing gender equity in Wisconsin or globally. They should also align with 4W's vision and core values, and employ gender analyses and/or use an intersectional feminist lens to address equity for all. 4W anticipates awarding grants of up to \$2,500 each. The 4W Engagement Grants for Emerging Scholars were established with support from the Women's Philanthropy Council. [Find more information on the 4W grants page here](#).

Call for Art

by Student Survivors



go.wisc.edu/SAAMart

- Pieces that represent your experience(s) of survivorship
- A variety of mediums
- New or previously created art



7: University Health Services (UHS) invites student survivors to submit artwork for a gallery of survivor art in support of Sexual Assault Awareness Month. This April, [UHS Survivor Services](#) and [Violence Prevention](#) will host [Connect & Reflect](#), a series of events and spaces for survivors of sexual violence and allies. The “Reflect” exhibit will be hosted from April 1-30, with plans to feature student survivor art, a historical review of significant moments in campus sexual assault activism over the last 50 years, and opportunities for student engagement to inform sexual violence work on our campus. Students are welcome to submit any pieces that represent their experience(s) of survivorship. We welcome artwork created specifically for this exhibit and/or previously created art. For more information and to indicate interest in submitting artwork, please complete [this online form](#) by **Friday, March 7**.

7: Deadline to submit applications to CEIBA's Water for Life: Sustainability & Community Health Program is **Friday, March 7**. Through the Water for Life program, students will spend two weeks in Ecuador studying the impact of land management practices on water quality, engaging in community-based water quality monitoring, and exploring the epidemiology of waterborne pathogens affecting human health in rural communities. [Click here to learn more and apply](#).

7: Deadline to submit poster proposals to Showcase 2025 is **Friday, March 7**. The Office of Strategic Consulting's annual Showcase event will take place on Thursday, April 17, and is designed to foster a culture of continuous improvement and organizational excellence at UW–Madison. It offers an opportunity for colleagues from across campus to share best practices, learn from each other's successes, and connect. If your school, college, division, or unit has implemented an improvement, innovation, or best practice over the past year, they invite you to share your success story by submitting a proposal to exhibit a poster at Showcase 2025. [Click here to learn more and apply](#).

14: Deadline to apply for the Washington (WiW) Fall 2025 Program is **Friday, March 14**. WiW will host three information sessions this Spring so students may learn more about the WiW Program, including interning in Washington DC, completing classwork in domestic & international issues, and connecting with UW alumni & professionals (see dates in Feb & Mar above). [Find more information on the WiW Internship Program here](#).

15: Deadline to submit applications to the 2025 Intensive Summer Multilanguage Seminar (IMLS) is **Saturday, March**

15: The Intensive Summer Multilanguage Seminar supports students to engage in online, performance-based self-instructional language study of a less commonly taught language (LCTL). Interested students should contact the [Wisconsin Intensive Summer Language Institutes](#) program office (multilanguage@lpo.wisc.edu) as soon as possible to determine their eligibility. [Click here to learn more](#). If interested, [click here to apply](#).

16: Deadline to submit applications to the 2025 Undergraduate Symposium is **Sunday, March 16**. Open to all undergraduates, the symposium provides the opportunity for students to present their work in a professional setting. It also provides students with practical experience in public speaking and presentation skills. Additionally, it serves as a forum for campus and community members to learn about and engage with undergraduate work. [Click here to learn more and submit your application](#).

17: The UW-Madison Global Health Institute (GHI), Office of Global Health in the School of Medicine and Public Health (SMPH), and CALS Global in the College of Agriculture and Life Sciences (CALS) are accepting abstracts for poster presentations for the 20th Global Health Symposium: ***Why Global Health Networks Matter***. UW-Madison faculty, clinicians, staff, students, and partners who are addressing global health and disease in their respective fields and research are invited to submit a poster abstract and present their work. From basic research to education to applied projects in the field, the symposium hopes to showcase the full spectrum of UW-Madison's global health activity. Presentations from all disciplines are encouraged—from arts, agriculture and business, to education, engineering, humanities, to all the health sciences, and more (**see story above**). **Poster abstract submissions are DUE by 11:59 p.m., March 17, 2025.** [Click here for info to submit](#).

APRIL

30: Applications for the UW Distinguished Research Fellows Program are open **now through Wednesday, April 30**. The UW Distinguished Research Fellows Program is designed to support outstanding postdoctoral trainees in interdisciplinary research areas related to [RISE-AI](#), [RISE-THRIVE](#), and [RISE-EARTH](#). The intent of this program is to support exceptional emerging scholars in collaborative research that spans two distinct units (schools, colleges and centers) at UW–Madison, and which synergizes distinct disciplinary approaches. [Click here to learn more and apply](#).

FOOD FOR THOUGHT ▼

+ **ICYMI: From *Global Health Now*:** "Just four days after Uganda's Ministry of Health announced a new Ebola outbreak on Jan. 30, 2025, a team of local and international investigators began a trial of a vaccine candidate against the Sudan virus." [Click here for the full story](#).

+ **ICYMI: From *The New York Times*:** "The nation's largest association of psychologists this month warned federal regulators that A.I. chatbots "masquerading" as therapists, but programmed to reinforce, rather than to challenge, a user's thinking, could drive vulnerable people to harm themselves or others." [Click here for the full story](#).

If you'd like to receive our weekly newsletter, [please use this link](#).

The Global Health Institute sends Tuesday updates to let you know about GHI and campus events and opportunities that foster deeper understanding of the complex determinants of health and disease for people, animals and ecosystems. *To submit global health related events or reading suggestions in GHI's Events+, send them to communications@ghi.wisc.edu by noon on Fridays.*

[Learn more about the Global Health Institute at ghi.wisc.edu.](#)

[Facebook](#)[Twitter](#)[LinkedIn](#)[Instagram](#)[Website](#)

Copyright © 2025 UW-Madison Global Health Institute, All rights reserved.

[unsubscribe from this list](#) [update subscription preferences](#)

