

[View this email in your browser](#)



Global Health Institute
UNIVERSITY OF WISCONSIN-MADISON



EVENTS +

CAN'T MISS IN THIS ISSUE

 ▼

ICYMI: TODAY'S WEBINAR ON "BUILDING INDIGENOUS TRUST AND PARTNERSHIPS FOR HEALTH"

MARK YOUR CALENDAR FOR GHI'S NEXT GLOBAL HEALTH TUESDAY WEBINAR, FEB 25TH

2025 HENRY ANDERSON III GRADUATE AWARD APPLICATIONS OPEN THROUGH MARCH 2, 11:59PM CST!

GHI BOARD MEMBER LUXME HARIHARAN AT ACOPE PEDIATRIC OPHTHALMOLOGY CONFERENCE IN BOGOTA

ICYMI: "BUILDING INDIGENOUS TRUST AND PARTNERSHIPS FOR HEALTH" ▼



UNIVERSITY OF WISCONSIN-MADISON PARTNERSHIPS FOR HEALTH

GLOBAL HEALTH TUESDAY WEBINAR

TUESDAY, JANUARY 28, 9-10AM (CST)



Carla Vigue
Director of Tribal Relations, UW-Madison



Caleb McGeshick
Councilman II, Sokaogon Chippewa Community



Jason Neilitz
Chief Information Officer, Sokaogon Chippewa Community



Kurt Zimmerman
Senior Director, Biohealth Industry Partnerships; Director, Master of Science in Biotechnology Program, UW-Madison



Lauren W. Yowelunh McLester-Davis
Director of Indigenous Science Advocacy, Native American Center for Health Professions, UW School of Medicine and Public Health

Visit ghi.wisc.edu For more information

ICYMI, the Global Health Institute's Global Health Webinar took place from 9-10am this morning. Carla Vigue, Director of [Tribal Relations](#), UW-Madison, moderated a timely conversation on *Building Indigenous Trust & Partnerships for Health*.

Vigue led the discussion with Caleb McGeshick, Councilman II, [Sokaogon Chippewa Community](#) (SCC); Jason Neilitz, Chief Information Officer, SCC; Kurt Zimmerman, Senior Director, [Biohealth Industry Partnerships](#), and Director, [Master of Science in Biotechnology Program](#), UW-Madison; and Lauren W. Yowelunh McLester-Davis, Director of Indigenous Science Advocacy, [Native American Center for Health Professions](#) (NACHP), UW School of Medicine and Public Health.

[Click here to learn more and view the webinar recording on GHI's YouTube channel \(coming soon!\).](#)

MARK YOUR CALENDAR FOR GHI'S FEBRUARY WEBINAR, "WOMEN IN SCIENCE" ▼



Global Health Institute UNIVERSITY OF WISCONSIN-MADISON WOMEN IN SCIENCE

GLOBAL HEALTH TUESDAY WEBINAR

TUESDAY, FEBRUARY 25, 9-10AM (CST)



Kristin Long
Assistant Professor of Surgery, UW-Madison



Caroline Zellmer
Senior Program Manager, Foresite Labs



Zuzana Burivalova
Assistant Professor, Forest and Wildlife Ecology, UW-Madison

Visit ghi.wisc.edu For more information

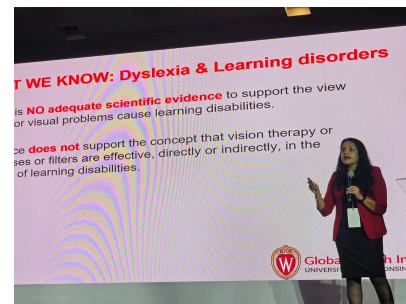
We welcome you to join us for the Global Health Institute's Global Health Webinar on Tuesday, February 25, 2025, from 9-10am (CST), when Kristin Long, Assistant Professor of Surgery, UW-Madison, moderates a timely conversation on *Women in Science*.

[Click here to learn more.](#) Please register here using [this Zoom registration link.](#)

2025 HENRY ANDERSON III GRADUATE AWARD APPLICATIONS OPEN THROUGH MARCH 2! ▾

The Henry Anderson III Graduate Award Application is now open! Applications will be accepted through **March 2, at 11:59pm (CST)**. The Henry Anderson III Graduate Student Award in Environmental and Occupational Public Health from the Global Health Institute (GHI) supports UW-Madison graduate or health professional students interested in pursuing research in the areas of environmental and occupational public health—that is the study of the role of environmental or occupational factors as determinants of health. [Click here to learn more and apply.](#)

GHI BOARD MEMBER LUXME HARIHARAN PRESENTS AT ACOPE PEDIATRIC OPHTHALMOLOGY CONFERENCE IN BOGOTA ▾



GHI Board Member Luxme Hariharan recently spoke at the ACOPE Pediatric Ophthalmology Conference in Bogota on Dyslexia, Learning Disorders and Vision in Children. Hariharan's background in Pediatric Ophthalmology and Public Health complements her special interest in the cross sections of child health, nutrition, infectious disease, prevention, migrant health, and childhood blindness prevention. While at the conference, Hariharan also shared information on GHI and the [GHI One Health Center-Colombia](#).

Many thanks to Hariharan for sharing both her work and GHI. You can find out more about her background on our [website](#).

MARK YOUR CALENDAR ▾

NOW-FEB 9: Wisconsin Welcome is a multi-week celebration that invites incoming freshmen and transfer students to discover Madison, meet fellow Badgers, and find their campus community. The Wisconsin Welcome will take place from **January 17 to February 9** and will include events from across campus. [Click here to learn more.](#)



Department of
Pathobiological Sciences
SCHOOL OF VETERINARY MEDICINE
UNIVERSITY OF WISCONSIN-MADISON

Seminar Series Presents:

Exploring the interplay between
warming temperatures and future implications
for West Nile virus transmission



Dr. Johnny Uelmen
Assistant Professor
SMPH - Population Health Sciences
UW - Madison

Tuesday, January 28 at 3:00 pm

Room 2350 – School of Veterinary Medicine
2015 Linden Drive

School of Veterinary Medicine • Department of Pathobiological Sciences
2015 Linden Drive, Madison WI 53706
<https://www.vetmed.wisc.edu/>
Advancing animal and human health with science and compassion

TODAY: PBS Seminar Series: **TODAY, January 28, 2025, at 3pm**, Dr. Johnny Uelmen, Assistant Professor, Population Health Sciences, UW School of Medicine and Public Health, is giving a seminar at Room 2350 – School of Veterinary Medicine, 2015 Linden Drive. The topic is "*Exploring the interplay between warming temperatures and future implications for West Nile virus transmission.*"



**DONZALEIGH
ABERNATHY**

Actress, Author, and Activist

MLK MAI

SYMPOSIUM

OSIUM

MARTIN LUTHER

T U E S D A Y

JAN 28 5:30 p.m.

SHANNON HALL

MEMORIAL UNION

IN-PERSON AND VIRTUAL

Learn more

go.wisc.edu/MLK

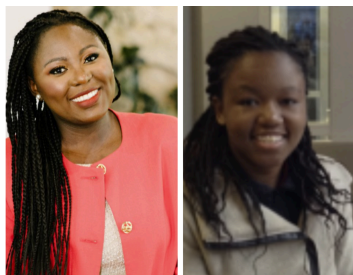


KING JR. SYMPOSIUM

TODAY: The Wisconsin Union Theater, UW-Madison Student Affairs, and the Division of Diversity, Equity, & Educational Achievement invite you to a celebration of Rev. Dr. Martin Luther King Jr.'s legacy at the [2025 MLK Symposium](#) and community reception **TODAY, January 28, 2025, from 5:30-7pm, at Shannon Hall**. This year's keynote speaker will be actress, author, and activist Donzaleigh Abernathy. [Click here for more information.](#)

TOMORROW: Join USDA's Role in Advancing One Health: Zoonotic Diseases and Beyond on **Wednesday, January 29, 2025, at 12pm CST**, for an engaging webinar highlighting USDA's One Health activities, with a focus on addressing zoonotic diseases such as Highly Pathogenic Avian Influenza (HPAI), SARS-CoV-2, and rabies, while also exploring USDA's broader contributions to the National One Health Framework, its historical successes in eradicating tuberculosis and brucellosis from the U.S. cattle population, and the current efforts to protect public health, agriculture, and wildlife. [Click here to register.](#)

TOMORROW: Are you passionate about making a difference in your community? The Public Service Fair is your chance to connect with nonprofit organizations that are driving social impact and creating positive change. Whether you're looking for volunteer opportunities, internships, or a year of service, this is the perfect place to find ways to get involved. Don't stress—just drop by and explore! This casual event is all about discovering organizations that align with your values! The event will take place on **Wednesday, January 29, 2025, from 3:30-6pm**, at Gordon Dining and Event Center. [Click here to learn more and register.](#)



TOMORROW: Africa Talks: Everyday Citizenship from Africa to Wisconsin: On **Wednesday, January 29, from 5-6:30pm**, join UW-Madison's African Studies Program for this monthly speaker series. The talk will feature GHI Board Member Linda Vakunta, Deputy Mayor, Madison, Wisconsin, and Irène Tombo, PhD candidate, Political Science, UW-Madison. [Click here to learn more.](#)

TOMORROW: Students from all disciplines are encouraged to come and learn more about ways to get involved with the [Tech Exploration Lab](#), a new multi-disciplinary campus initiative at the [Wisconsin Institute for Discovery](#) (WID) for

[more.](#)A graphic for the University Health Services Open House. It features a dark red background with white text and decorative elements. The main title 'UNIVERSITY HEALTH SERVICES OPEN HOUSE' is in large, bold, white letters. Below it, the location '333 East Campus Mall' and date 'Thursday, January 30 | 5 PM–7 PM' are listed. A list of activities includes Snacks, Crafts, Games, Mindfulness Sessions, and Giveaways. A QR code is provided for more information, and the UHS logo is at the bottom right.

UNIVERSITY HEALTH SERVICES OPEN HOUSE

333 East Campus Mall
Thursday, January 30 | 5 PM–7 PM

- Snacks
- Crafts
- Games
- Mindfulness Sessions
- Giveaways




 **UHS** | University Health Services
UNIVERSITY OF WISCONSIN-MADISON

30: Join mental health providers, medical professionals, and other UHS staff at the UHS Open House on **January 30 from 5-7pm**. Explore the wide range of services UHS offers to support your health and wellbeing. Enjoy snacks, crafts, games, mindfulness sessions, and giveaways. [Click here to learn more.](#)

FEBRUARY

3: Intern Abroad in Latin American & Spain Info Session and Free Lunch: Looking to build your resume and gain professional experience abroad? Learn how to Intern Abroad through International Academic Programs (IAP), developing career and cross-cultural skills while earning UW–Madison credit. This event will take place on **Monday, February 3, from 12-1pm**. [Click here to learn more and register.](#)



Mental Health Resource Fair

Feb 12, 5-7 PM

Memorial Union Tripp Commons

12: Join the Mental Health Student Advisory Board (SAB) on **Wednesday, February 12 from 5-7pm** in Memorial Union, Tripp Commons for the annual Mental Health Resource Fair! Connect with student-led organizations, learn about services offered by UHS Mental Health Services, and enjoy hot beverages and free giveaways. [Click here to learn more.](#)



CAREER & INTERNSHIP FAIR
UNIVERSITY OF WISCONSIN-MADISON
AT THE DISCOVERY BUILDING

DAY 1
TUESDAY, FEB. 18
4PM - 7PM

DAY 2
WEDNESDAY, FEB. 19
4PM - 7PM

EVERY MAJOR & ANY YEAR
CAREERFAIR.WISC.EDU

18-19: The All-Campus Career & Internship Fair is returning for Spring 2025, with two days of opportunities for UW–Madison students to connect with a wide range of employers. The Fair is open to ALL enrolled UW–Madison students, plus recent alumni who graduated within the past two years. [Click here to learn more.](#)

20-23: CUGH 2025: Innovating and Implementing in Global Health for a Sustainable Future. In Atlanta, Georgia, from **February 20-23**, join over 1,800 innovators, leaders, scientists, students and implementers, as they come together to address some of the world’s most pressing challenges. The conference theme, ‘Innovating and Implementing in Global Health for a Sustainable Future’, embraces many issues important to global health and development. Individuals from academia, NGOs, government, INGOs and the private sector, across a range of biomedical and non-biomedical disciplines are encouraged to participate in the conferences. Also, don’t forget to attend the Pre-Conference Workshops on **February 20**. They are free and open to all. Registration will open in January. Attendees at CUGH2025 will be inspired and challenged to learn new skills, gain new contacts and find ways to improve the wellbeing of people and the planet. [Click here to learn more.](#)

25: Mark your calendar for GHI's February Global Health Tuesday Webinar: Women in Science, **Tuesday, February 25, 9am**. Kristin Long, Assistant Professor of Surgery, with clinical practice in Endocrine Surgery, UW–Madison (and GHI Advisory Committee Member), moderates a timely conversation on women in science. Long leads the discussion with Caroline Zellmer, Senior Program Manager, Foresite Labs, and Zuzana Burivalova, Assistant Professor, Department of Forest & Wildlife Ecology, and the Nelson Institute for Environmental Studies, UW–Madison. (see story above) [Click here to register.](#)

27: On **Thursday, February 27, at 6:30pm**, The Havens Wright Center for Social Justice and the Latin American, Caribbean, and Iberian Studies Program are screening the film *Separated* at the Marquee Cinema in Union South. Film screening will begin at 6:30 PM with an informal conversation to follow. Academy Award®-winning filmmaker Errol Morris incisively probes the darkest chapters in recent American history: family separations. Merging narrative vignettes of one migrant family’s plight with hard-hitting interviews with government officials, Morris paints a jaw-dropping picture of the state-sponsored crisis of cruelty, as hundreds of families remain separated today. [Click here to learn more.](#)

MARCH

Department of Communication Arts; Director, Latin American, Caribbean and Iberian Studies Program; Co-chair of the Human Rights Program (and GHI Advisory Committee Member), UW–Madison, moderates a timely discussion on impactful health storytelling with panelists Riley Ray Griffin, Reporter, Bloomberg News; Apoorva Mandavilli, Science and Global Health Reporter, New York Times; and Jamie Hansen, Stanford Global Health Communications Manager. [Click here to register.](#)

19-20: Showcase your work at the Data Science Research Bazaar, **Wednesday and Thursday, March 19-20**, at the Discovery Building. Researchers, students and professionals at all levels of expertise are invited to apply to showcase their work. Proposals are sought for lightning talks, posters, workshops and interactive discussions. While this year's theme focuses on artificial intelligence and machine learning in research, submissions from all areas of data science and computational work are encouraged. [Learn more and apply by Jan 15.](#)

APRIL

7: The Wisconsin Idea Conference is a one-day event on **Monday, April 7** that brings together academics, service providers, community leaders, students, and others interested in fostering partnerships that advance meaningful impacts within the community and state. This year's conference will focus on the concept of *Exchange* – together, attendees explore ways to collaborate for positive change in nearby communities and across the state, build new relationships, and exchange ideas and resources to innovate solutions for the challenges facing nearby communities. [Click here to learn more.](#) If interested, [click here to register.](#)

8: Mark your calendars for Tuesday, April 8th, 4-8pm as UW–Madison's Global Health Institute (GHI), School of Medicine and Public Health (SMPH) Office of Global Health, and CALS Global at the College of Agricultural and Life Sciences (CALS) invite you to attend the 20th Annual Global Health Symposium: ***Why Global Health Networks Matter***. The event will take place at the Discovery Building and features a keynote speaker, posters from across campus showcasing global health projects, and panel discussing ***White-nose Syndrome in Bats Connection to One Health***. More information on participants, poster submissions, and registration (in person and virtual) is coming soon. [Click here to see information from last year's symposium.](#) For more information, please [contact GHI here.](#)

8-9: Save the date to join the University of Wisconsin Organic Collaborative for Harvest of Ideas 2.0 "Organics as a Solution to Global Challenges." The event will be held at the Pyle Center on **Tuesday and Wednesday, April 8 and 9**. This event will bring together domestic and international researchers, farmers, and policy experts to discuss ways to advance organic priorities. [Information about registration will be shared when available.](#)



10-12: The 2025 WGSC Spring Conference, "*Embodying Feminism: Calling In, Calling Out, Calling to Action*" will take place in-person on **Thursday to Saturday, April 10-12**. Join for a keynote and several concurrent sessions with high-level panelists. [Click here to learn more.](#)

23-24: The theme for the 7th convening and two day, in-person, *Our City of Nations* conference at the [Milwaukee School of Engineering](#) on **Wednesday and Thursday, April 23 - 24**, is *Stronger Together: 10 Years of OCON and an Eye on the Future*. Conference registration and active participation requests are now open. [Click here to register.](#)

25: The 2025 Undergraduate Symposium will be held from **9:30am to 4:15pm on Friday, April 25**, at Union South. The annual Undergraduate Symposium showcases undergraduate creativity, achievement, research, service-learning, and community-based research from all areas of study at UW–Madison including the humanities, arts, biological sciences, physical sciences, social sciences, and computer data and information sciences. [Click here to learn more.](#)

DEADLINES

ROLLING: Applications for the UW Distinguished Research Fellows Program are open **now through Wednesday, April 30**. The UW Distinguished Research Fellows Program is designed to support outstanding postdoctoral trainees in interdisciplinary research areas related to [RISE-AI](#), [RISE-THRIVE](#), and [RISE-EARTH](#). The intent of this program is to support exceptional emerging scholars in collaborative research that spans two distinct units (schools, colleges and centers) at UW–Madison, and which synergizes distinct disciplinary approaches. [Click here to learn more and apply.](#)

**Proficiency-Driven
Summer Programs for**



30+ Languages

Arabic	Hindi	Nepali	Tamil
Azerbaijani	Hmong	Pashto	Thai
Bengali	Indonesian	Persian	Tibetan
Burmese	Javanese	Portuguese	Turkish
Danish	Kazakh	Punjabi	Urdu
Dari	Khmer	Sanskrit	Uyghur
Filipino	Kyrgyz	Sinhala	Uzbek
Gujarati	Lao	Tajik	Vietnamese
Hebrew	Marathi		

One Year of Language Study in 8 Weeks
June 16 – August 8, 2025



**Funding
Available**



**Virtual Classes
for Credit**



**Accelerated
Pace**



Wisconsin Intensive
Summer Language Institutes
UNIVERSITY OF WISCONSIN-MADISON



[Learn more at wisl.wisc.edu](http://wisl.wisc.edu)

The Wisconsin Intensive Summer Language Institutes (WISLI) hosts [seven summer institutes](#) that offer high-quality, proficiency-based courses for [30+ languages](#) for undergraduates, graduate students, and adult learners. Applications for CESSI are due **February 1**, and applications for the remaining summer institutes are due **March 15**. [Click here to learn more and apply.](#)

JANUARY

21: The Stanford Center for Innovation in Global Health, in partnership with Stanford Journalism and CNN Health, seeks medical trainees with a passion for global health and storytelling to apply for the [2025-26 Global Health Media Fellowship](#). This fellowship helps medical students develop their expertise in promoting global health equity and fighting medical misinformation — skills that are urgently needed to address the health challenges and disparities the world faces today. Applications are due **TODAY, January 21, 2025**. [Click here to learn more and apply.](#)

24: Deadline to submit applications to the National Dissertation Award for Research on Poverty and Economic Mobility is **Friday, January 24, 2025**. The [Institute for Research on Poverty \(IRP\)](#) at the University of Wisconsin–Madison invites applications from dissertators who are from groups that are underrepresented in academia for its 2025–2026 National Dissertation Award for Research on Poverty and Economic Mobility program. IRP has established this award to support an outstanding dissertation project that explores issues of poverty, inequality, and economic mobility in human services. The fellowship awards \$25,000 to a dissertator’s home institution to be spent by September 29, 2026. Funding can be used to cover items including tuition, stipend, data acquisition (e.g., data access fees, purchase of data sets, collection of qualitative data, etc.), research assistance, subject payments (including compensating community members

conference), and supplies. [Click here to learn more and apply.](#)

24: Deadline to submit breakout sessions and poster proposals for UW–Madison's Teaching and Learning Symposium is **Friday, January 24, 2025**. The 2025 Teaching & Learning Symposium will share effective practices and spark discussion about the opportunities and challenges that lie ahead. They are seeking proposals for engaging presentations and posters that spotlight learning across campus. Proposals should specifically address one or more of the following topics within the theme “Engage and Inspire: The New College Classroom.” The symposium will be held in person on May 15, 2025, at Union South from 8:30am to 4pm. [Click here to learn more and submit a proposal.](#)

27: Deadline to submit nominations for the 2025 Wisconsin Idea Seminar is **Monday, January 27, 2025**. The 2025 Wisconsin Idea Seminar is set to run May 12–16, 2025. Because nominations for this program require Dean’s Office approval, there are some CALS-specific guidelines to follow. Specifically: In addition to the full nomination form required by campus, please also provide a short paragraph describing how the experience will benefit the nominee. Please send both the full nomination form and the short paragraph to [Tara Darga](#) by email or interdepartmental mail. [Click here to learn more and apply.](#)

31: The Gates Foundation and LifeArc have launched a joint Grand Challenges request for proposals, *“Innovations for Exceptionally Low-Cost Monoclonal Antibody (mAb) Manufacturing”*. While the organizations will employ a coordinated review process, individual grants will be funded either by the Gates Foundation or by LifeArc. Applications for proof-of-concept projects (Option A) are due by **11:30am PST on Friday, January 31, 2025**. Please review the full details for both opportunities on their [Grand Challenges website](#). They are eager to receive as many proposals as possible.

31: [Howard University's Center on Race and Wealth \(CRW\)](#) and the [Institute for Research on Poverty \(IRP\) at the University of Wisconsin–Madison](#) seek applications for their Graduate Student Research Workshop on Poverty and Economic Mobility. This week-long workshop, held at Howard University in Washington, DC, is aimed at pre-proposal doctoral students in the social sciences studying topics related to poverty or inequality in the United States who are from disadvantaged backgrounds. Applications are due **Friday, January 31, 2025**. The workshop offers intensive training and mentorship to help attendees expand their skills, knowledge, and resources needed to prepare an effective dissertation proposal centered on policy-relevant, actionable research that will inform human services and economic mobility policies. The workshop will be led by faculty from Howard University and IRP affiliates. Students will set and accomplish daily goals, participate in group lectures, work individually and in small groups, and consult with workshop mentors. [Click here to learn more and apply.](#)

31: Deadline to register for Badger Volunteers is **Friday, Jan 31, 2025**. Badger Volunteers (BV) is a semester-long program (11-week commitment) that pairs teams of students with community organizations to volunteer 1 to 4 hours each week at the same organization. The program is designed to foster meaningful and consistent connections between community partners and students over the course of an entire semester. Students can only register online at go.wisc.edu/bv.

FEBRUARY

7: Deadline to submit breakout session proposals to Showcase 2025 is **Friday, February 7**. The Office of Strategic Consulting's annual Showcase event will take place on Thursday, April 17, and is designed to foster a culture of continuous improvement and organizational excellence at UW–Madison. It offers an opportunity for colleagues from across campus to share best practices, learn from each other's successes, and connect. If you have a new approach, success story, or best practice to share, or if you think others may benefit from some of the lessons you've learned from your own experience, they encourage you to complete a proposal to present at Showcase. [Click here to learn more and apply.](#)

9: Deadline to submit final proposals to the Wisconsin Idea Fellowship is **Sunday, February 9**. Priority Deadline applicants must RESUBMIT their proposals. Late proposals will not be accepted. Applicants who choose to submit after the priority deadline will not be penalized, but they will not receive feedback on proposals prior to final evaluation. The Wisconsin Idea is the driving mission to ensure that the education and research at UW–Madison is used to benefit communities beyond our campus borders. Wisconsin Idea Fellowships are awarded annually to undergraduate student projects working towards addressing a challenge identified along with a local or global community partner. Fellowships are awarded to semester-long or year-long projects designed by an undergraduate student (or group of students) in collaboration with a community organization and a UW–Madison faculty or academic staff member. [Click here to learn more and apply.](#)

10: Deadline to submit proposals for the 2025 Collaborative Health Sciences Program is **Monday, February 10**. Through the Collaborative Health Sciences Program (CHSP), the Partnership Education and Research Committee (PERC) supports interdisciplinary team science to advance novel research or education approaches that bring together different disciplines to target complex health problems while advancing health, health care or health equity in Wisconsin and beyond. Proposals must be led by a collaborative team composed of a Principal Investigator and one or two Co-Principal Investigators from two or more of the following disciplines: basic, clinical, education, informatics/data, population, social/behavioral, and/or translational sciences. [Click here to learn more and submit a proposal.](#)

10: Deadline to submit applications to the HEX-U program for undergraduates is **Monday, February 10**. The HEX program provides participating students with training in community partnership, mentoring during project design and implementation, and professional development opportunities. Since 2005, HEX scholars have worked with over 125 community partners. (Applications for HEX (graduate students) run on a rolling basis.) [Click here to learn more and apply.](#)

12: Deadline to submit applications to the Holstrom Environmental Research Fellowship is **Wednesday, February 12**. The Holstrom Environmental Research Fellowship provides research training and support to undergraduates interested in environmental research. Students have the opportunity to undertake their own research project in collaboration with UW–Madison faculty or research/instructional academic staff. *Please Note: Graduate students are*

[more and apply.](#)

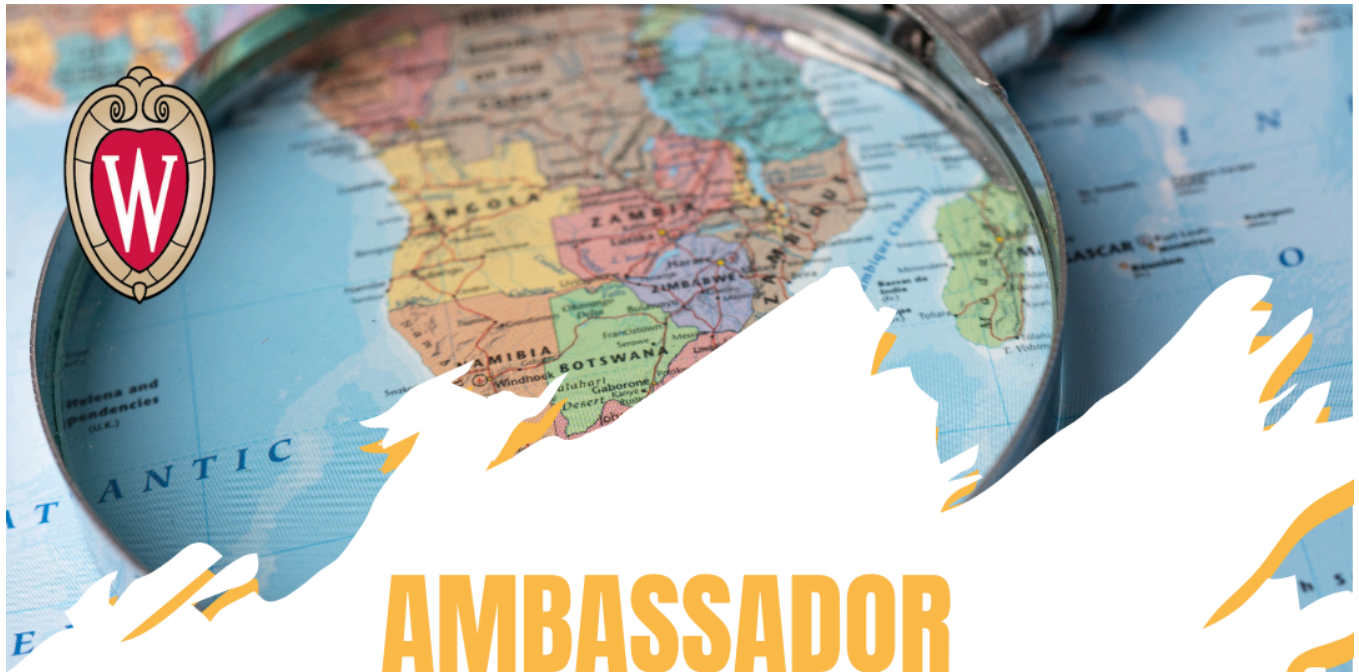
12: Deadline to submit applications to the Hilldale Undergraduate Faculty Research Fellowship is **Wednesday, February 12**. The Hilldale Undergraduate/Faculty Research Fellowship provides research training and support to undergraduates. Students have the opportunity to undertake their own research project in collaboration with UW–Madison faculty or research/instructional academic staff. *Please Note: Graduate students are ineligible to serve as the project advisor.* Approximately 97 – 100 Hilldale awards are available each year. [Click here to learn more and apply.](#)

14: Deadline to submit applications to the International Division Pre-Dissertation Travel Scholarship is **Friday, February 14**. These are available to students of any nationality who are enrolled in a doctoral program at the University of Wisconsin–Madison and are planning to conduct preliminary dissertation field research abroad. Those enrolled in *terminal* master's degree programs are *not* eligible for this award. This award is for early career PhD students (students in the first few years or coursework phase of their program) to conduct exploratory research and or begin to develop dissertation plans. [Click here to learn more and apply.](#)

14: Deadline to submit applications to the IRIS Graduate Student Summer Fieldwork Award is **Friday, February 14**. These are one-time awards of \$3,000 to be used in support of 6 or more weeks of summer fieldwork conducted outside the United States. Time abroad outside the summer months will be considered though applicants should address these circumstances in their statement *and* should have their advisor address this in their letter of recommendation as well. In collaboration with the Black Languages, Arts, and Culture Foundation (BLAC Foundation), IRIS is pleased to offer a \$1,000 supplemental grant to students pursuing international field research in the global south on topics related to art, language, or culture. After reading the BLAC Foundation's mission statement on its website – www.blacfoundation.org – those interested should indicate that they wish to be considered for this additional funding. [Click here to learn more and apply.](#)

14: Deadline to submit applications to the IRIS Area and International Studies Awards for Incoming Graduate Students is **Friday, February 14**. The purpose of these grants is to recruit strong incoming graduate students who will at some point in their graduate training require a period of international fieldwork or development of language or cultural competence off the UW-Madison campus. These are grants of \$5,000 to be used in the first 3 years of the recipient's career at UW-Madison to support a specific period of international fieldwork or development of language or cultural competence off the UW-Madison campus. *These awards are not intended to be used as flexible research funds.* [Click here to learn more and apply.](#)

24: Deadline to submit applications to the Sophomore Research Fellowship is **Monday, February 24**. Funded by grants from the Brittingham Wisconsin Trust, the Kemper K. Knapp Bequest, and the Provost's Office, the Sophomore Research Fellowship provides research training and support to undergraduates. Students have the opportunity to undertake their own research project in collaboration with UW–Madison faculty or research/instructional academic staff. *Please Note: Graduate students are ineligible to serve as the project advisor.* Approximately 40 Sophomore Research Fellowships are



AMBASSADOR JOHN E. LANGE SCHOLARSHIP FOR STUDY ABROAD IN AFRICA

\$7,500 scholarship to participate in a
UW-Madison semester study abroad program
in sub-Saharan Africa

Botswana · Ghana · Kenya · Rwanda · Senegal · South Africa · Tanzania

24: Deadline to submit applications to the Ambassador John E Lange Scholarship for Study Abroad in Africa is **Monday, February 24**. The Fund is intended to support undergraduate students studying abroad in Sub-Saharan Africa, including those who have an interest in global health. The purpose of this Fund is to support up to three undergraduate students per year who wish to study abroad in Sub-Saharan Africa through the University of Wisconsin's International Academic Programs Office. [Click here to learn more and apply.](#)

MARCH

1: Deadline to submit Student Engagement Grants is **Saturday, March 1**. Each year the Lakeshore Nature Preserve awards several Student Engagement Grants of up to \$1000 each to facilitate the use of the Preserve as a resource for

individuals may submit a proposal as a team. Every individual or team must have at least one faculty or staff member, who is expected to play an active role in overseeing the project. [Click here to learn more and apply.](#)

2: Application deadline for the Henry Anderson III Graduate Awards at the UW–Madison Global Health Institute is March 2, at 11:59pm (CST). The Henry Anderson III Graduate Student Award in Environmental and Occupational Public Health from the Global Health Institute (GHI) supports UW-Madison graduate or health professional students interested in pursuing research in the areas of environmental and occupational public health—that is the study of the role of environmental or occupational factors as determinants of health (**See story above**). [Click here to learn more and apply.](#)

3: Deadline to nominate a mentor for the 'Awards for Mentoring Undergraduates In Research, Scholarly and Creative Activities' is **Monday, March 3**. The Office of the Provost offers awards to recognize the important role mentors play in fostering undergraduates' intellectual, personal and professional growth through participation in high-impact practices including research, scholarly and creative endeavors. These awards provide faculty members, groups of mentors, academic staff, post-doctoral fellows and graduate students with recognition for their excellence in mentoring undergraduates and their contribution to students' [Wisconsin Experience](#). [Click here to learn more and nominate.](#)

7: Deadline to submit poster proposals to Showcase 2025 is **Friday, March 7**. The Office of Strategic Consulting's annual Showcase event will take place on Thursday, April 17, and is designed to foster a culture of continuous improvement and organizational excellence at UW–Madison. It offers an opportunity for colleagues from across campus to share best practices, learn from each other's successes, and connect. If your school, college, division, or unit has implemented an improvement, innovation, or best practice over the past year, they invite you to share your success story by submitting a proposal to exhibit a poster at Showcase 2025. [Click here to learn more and apply.](#)

15: Deadline to submit applications to the 2025 Intensive Summer Multilanguage Seminar (MULTI) is **Saturday, March 15**. The Intensive Summer Multilanguage Seminar supports students to engage in online, performance-based self-instructional language study of a less commonly taught language (LCTL). Interested students should contact the [Wisconsin Intensive Summer Language Institutes](#) program office (multilanguage@lpo.wisc.edu) as soon as possible to determine their eligibility. [Click here to learn more.](#) If interested, [click here to apply.](#)



16: Deadline to submit applications to the 2025 Undergraduate Symposium is **Sunday, March 16**. Open to all undergraduates, the symposium provides the opportunity for students to present their work in a professional setting. It also provides students with practical experience in public speaking and presentation skills. Additionally, it serves as a forum for campus and community members to learn about and engage with undergraduate work. [Click here to learn more and submit your application.](#)

FOOD FOR THOUGHT

+ ICYMI: GHI Advisory Committee Member, Sara McKinnon, professor of Rhetoric, Politics & Culture in the [Department of Communication Arts](#) in the [College of Letters and Science](#) at the University of Wisconsin-Madison, director of the [Latin American, Caribbean and Iberian Studies Program](#), and co-chair of the [Human Rights Program](#), was recently featured in an article by WMTV Channel 15 News. [Click here for the full article.](#)

+ Find connection and support this semester: You chose your class schedule for this semester—but have you scheduled time for connection and support? The start of the semester is a good opportunity to look ahead to how you may support yourself through more challenging or stressful times. University Health Services (UHS) provides many opportunities to connect with other students in a safe, confidential and supportive space through UHS group counseling and Badger Recovery. [Click here to learn more.](#)

+ ICYMI: From *The Institute on Aging, UW–Madison*: "Chronic pain is a leading cause of disability worldwide and has significant impacts on people's lives, including contributing to severe, ongoing stress. This study explored the interactions between chronic pain and work-family interactions, given that work and family are key areas in which people experience stress. It also examined the role of the stress hormone cortisol. Normal patterns of cortisol peak in the morning to provide energy to start the day and decline at bedtime to allow rest. When stress disrupts this normal pattern it can lead to problems with physical and mental health." [Click here to read more about these findings from the MIDUS study.](#)

If you'd like to receive our weekly newsletter, [please use this link](#).

The Global Health Institute sends Tuesday updates to let you know about GHI and campus events and opportunities that foster deeper understanding of the complex determinants of health and disease for people, animals and ecosystems. *To submit global health related events or reading suggestions in GHI's Events+, send them to communications@ghi.wisc.edu by noon on Fridays.*

[Learn more about the Global Health Institute at ghi.wisc.edu.](https://ghi.wisc.edu)



Facebook



Twitter



LinkedIn



Instagram



Website

Copyright © 2025 UW-Madison Global Health Institute, All rights reserved.

[unsubscribe from this list](#) [update subscription preferences](#)

