

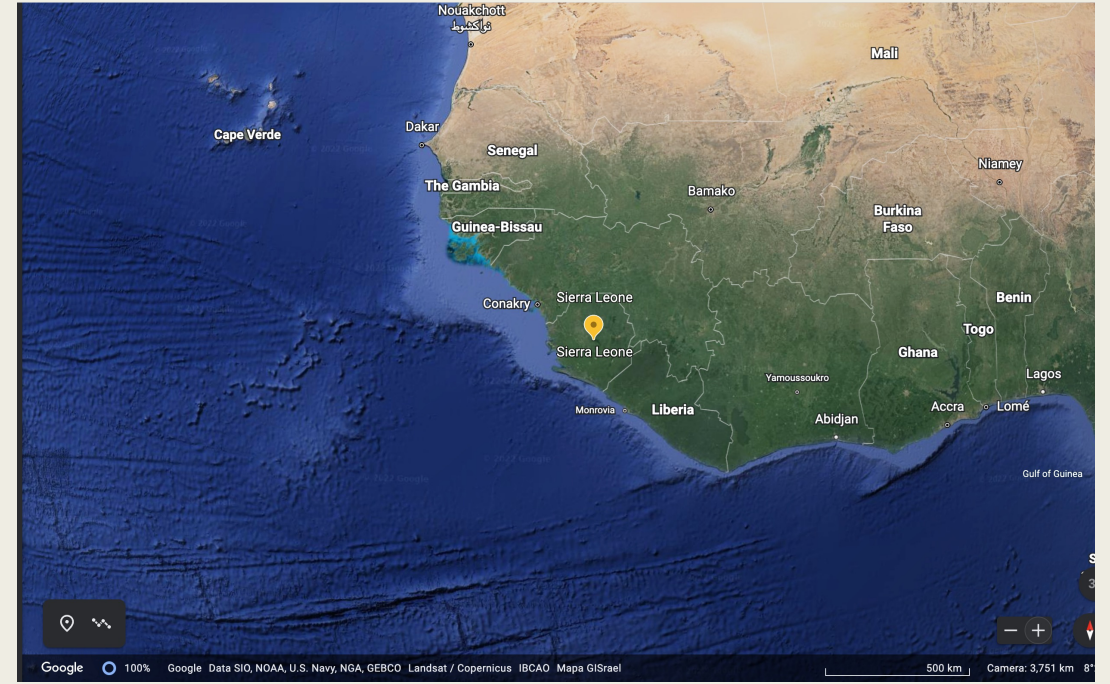
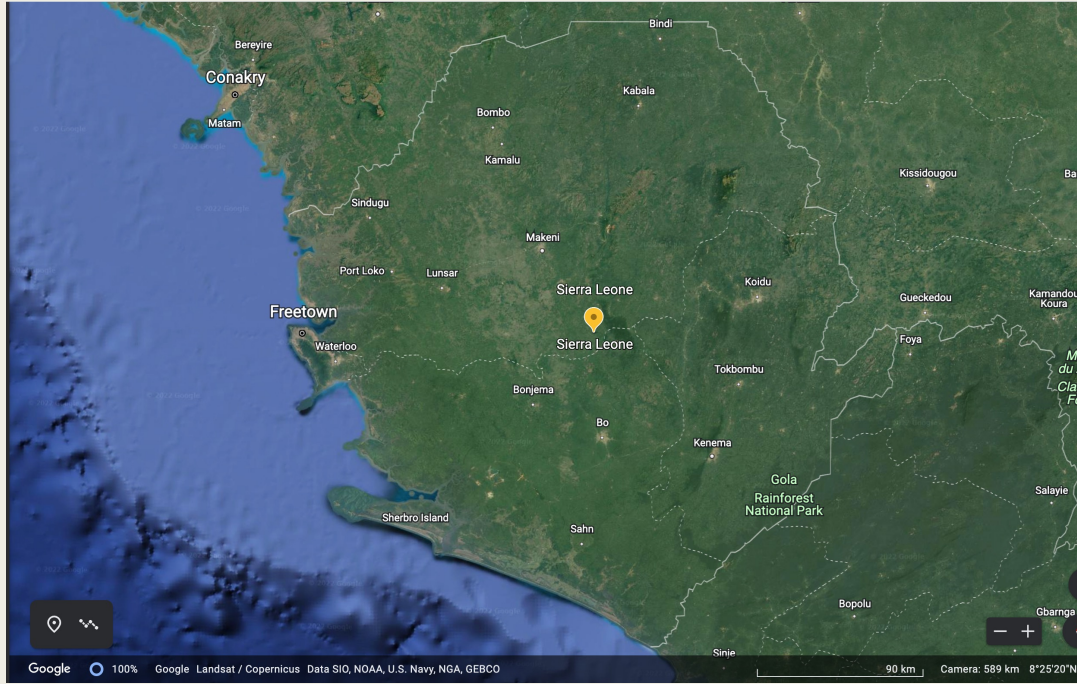
UW-MADISON GHI ONE HEALTH CENTER WEST AFRICA

Alhaji U. N'jai, PhD.

Founder and Chief Strategist, Project 1808, Inc and
Koinadugu College

Department of Biological Sciences, Fourah Bay College
(FBC), Dept. of Microbiology, College of Medicine and
Allied Health Sciences (COMAHS)

University of Sierra Leone



SIERRA LEONE



Background

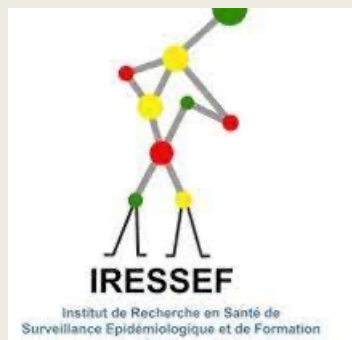
- Sierra Leone is endemic to epidemic-prone diseases, Viral Hemorrhagic Fevers (VHFs), Acute Febrile Illnesses (AFI), and Measles
- The effects of the 1990 to 2001 civil war severely weakened the country's fragile healthcare system
- Lessons from the 2013 to 2016 Ebola epidemic fostered significant improvements in Sierra Leone's disease surveillance systems;
 - ❖ *Revitalization of a well-structured Integrated Disease Surveillance and Response (IDSR)*
 - ❖ *Field Epidemiology Training Program (FETP)*

FORMAL LAUNCH OF UW-MADISON GHI ONE HEALTH CENTER WEST AFRICA AND APDC AFI





Global Health
Institute



SURVEILLANCE OF ACUTE FEBRILE ILLNESS (AFI)/FEVERS OF UNKNOWN ORIGIN (FUO) REGISTERED IN HEALTH FACILITIES IN SIERRA LEONE

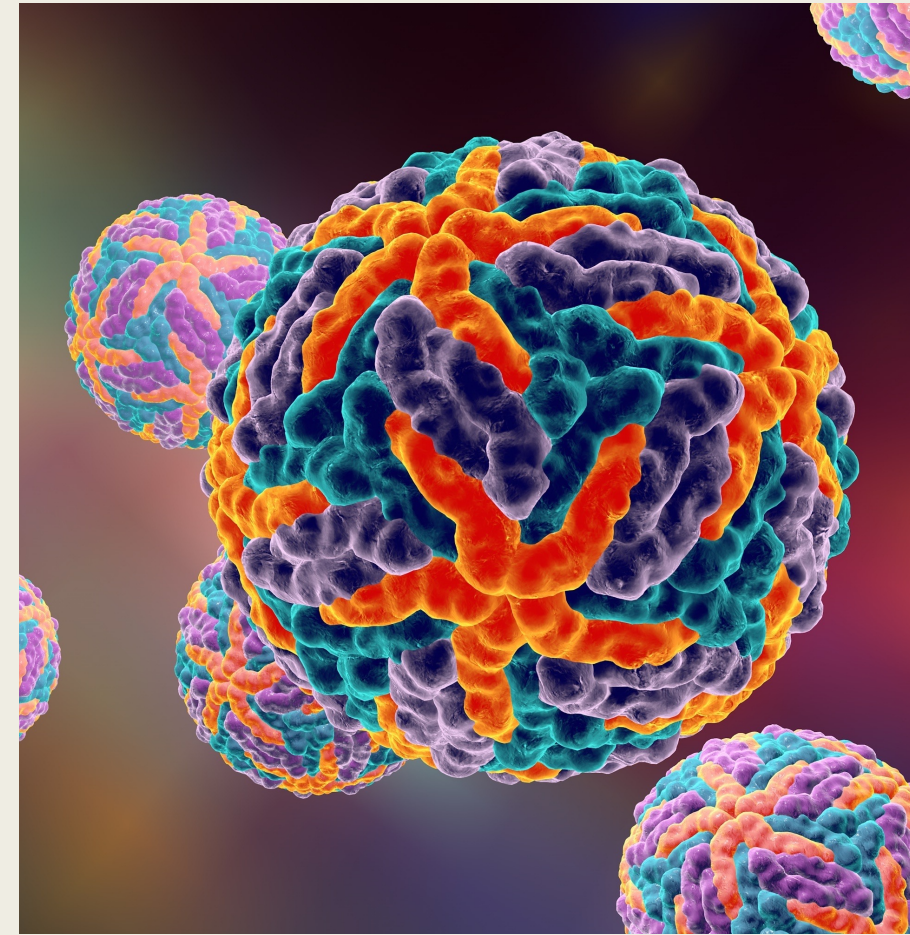


Abbott



Background

- The study seeks to identify and diagnose Acute Febrile Illness (AFI) or Fevers of Unknown Origin (FUO) at designated sentinel health facilities in Freetown, Sierra Leone
- The AFI/FUO study is supported by:
 - ❖ **Abbott Pandemic Defense Coalition (APDC) funding.** Sierra Leone was recently selected to be part of the APDC
- The APDC is a first-of-its-kind global scientific and public health partnership with the goal of early detection of, and rapid response to, future pandemic threats
- The goal of the program is to
 - ❖ identify new pathogens, analyze potential risk level,
 - ❖ rapidly develop and deploy new diagnostic testing,
 - ❖ and assess public health impact in real time.





Location of Sentinel Sites in Freetown, Sierra Leone

Choitram Memorial Hospital



Connaught Government Hospital



Ola During Childrens Hospital



Rokupa Government Hospital



Military Hospital 34



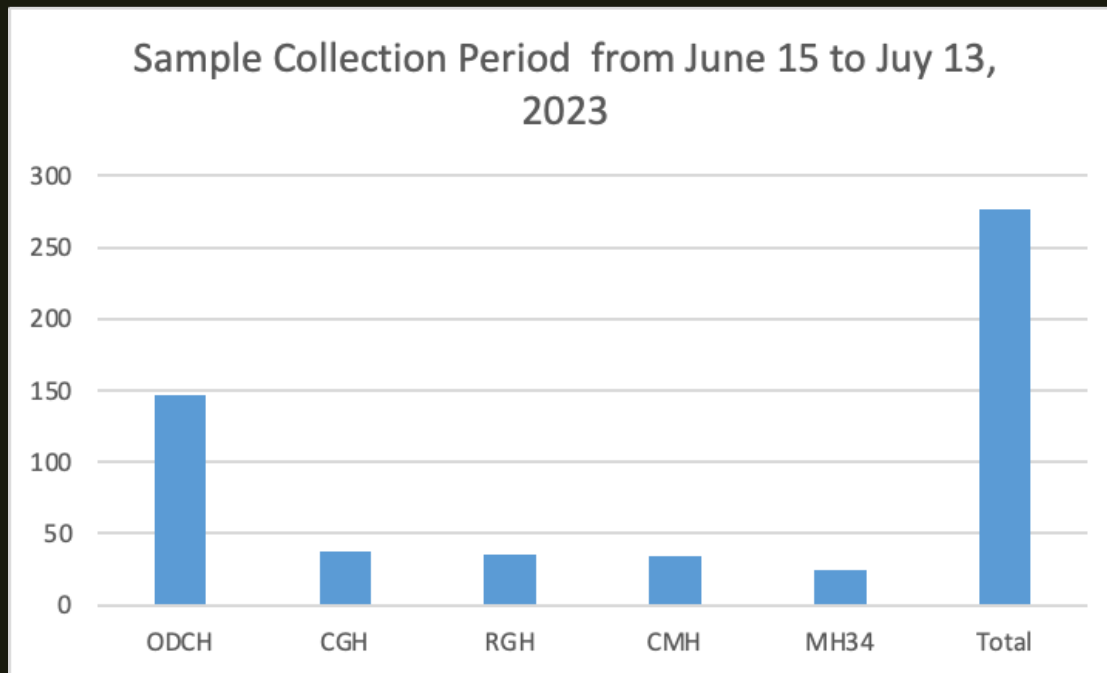
**SENTINEL
HOSPITALS,
FREETOWN**



CENTRAL PUBLIC HEALTH REFERENCE LAB (CPHRL), LAKKA, FREETOWN

Sample Collection Update -

- A Total of 277 Samples collected from all Sites from June 15 to July 13, 2023



Sample Collection Period (June 15, 2023 to July 13, 2023)	
Name of Site	Number of Samples
Ola During Children Hospital (ODCH)	147
Connaught Government Hospital (CGH)	37
Rokupa Government Hospital (RGH)	35
34 Miliatry Hospital (MH34)	24
Choitram Memorial Hospital (CMH)	34
Total for All Sites	277

THANK YOU

- ❑ JORGE AND UW-MADISON GHI TEAM
- ❑ ABBOTT LABORATORIES
- ❑ MINISTRY OF HEALTH AND SANITATION
- ❑ PROJECT 1808
- ❑ GHI OHC WA RESEARCH TEAM

